

Long Bridge

Capital Trails Symposium
November 2019





CAPITAL TRAIL NETWORK

- Existing Trails
- - - Planned Trails
- - - Priority Planned Trails

Capital Crescent Trail

This trail will run along the Purple Line and connect Bethesda to Silver Spring.

I-66 Trail

This 16-mile segment would connect communities from Merrifield to Gainesville along I-66.

MILES OF TRAIL NETWORK



Central Avenue Connector Trail

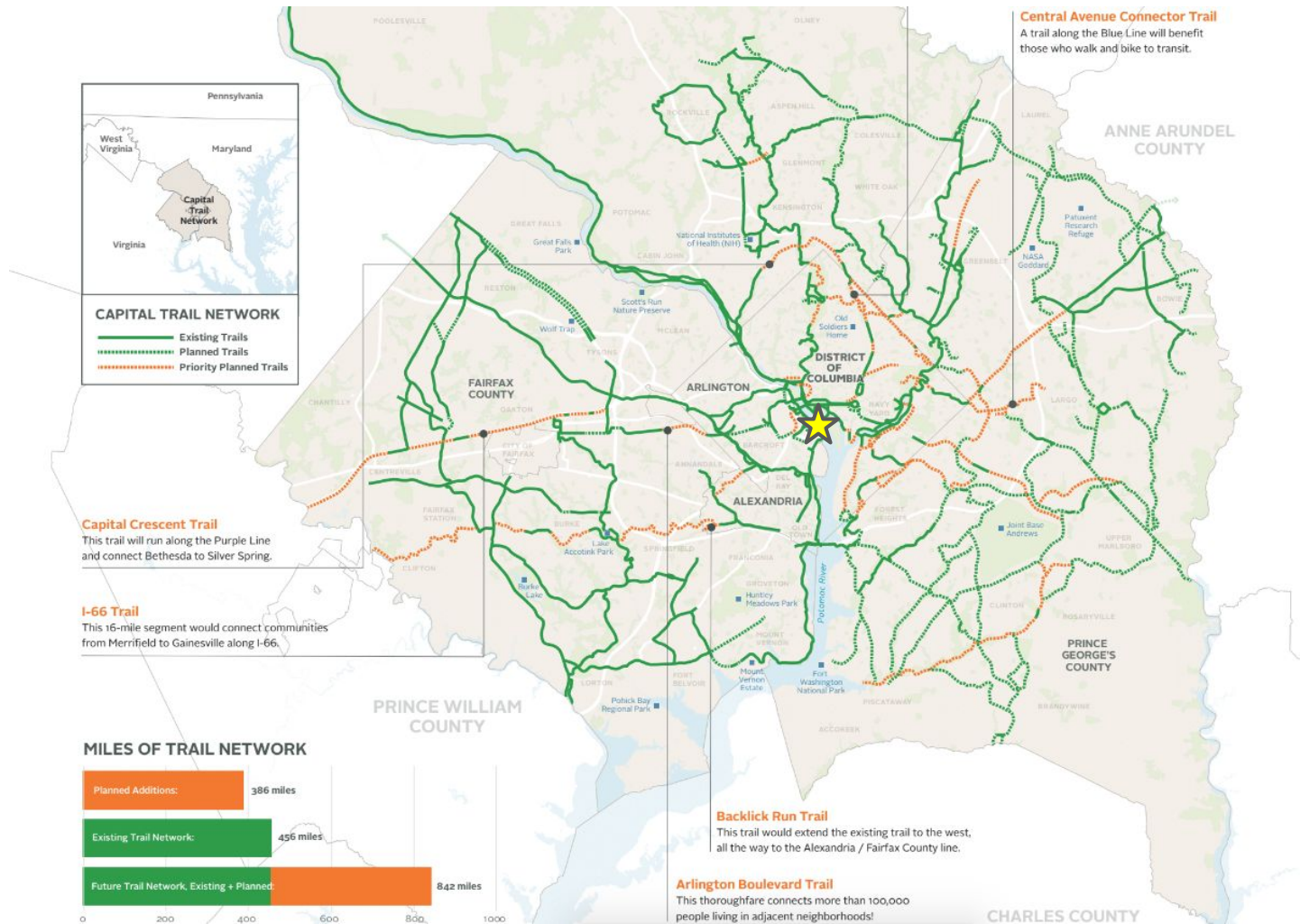
A trail along the Blue Line will benefit those who walk and bike to transit.

Backlick Run Trail

This trail would extend the existing trail to the west, all the way to the Alexandria / Fairfax County line.

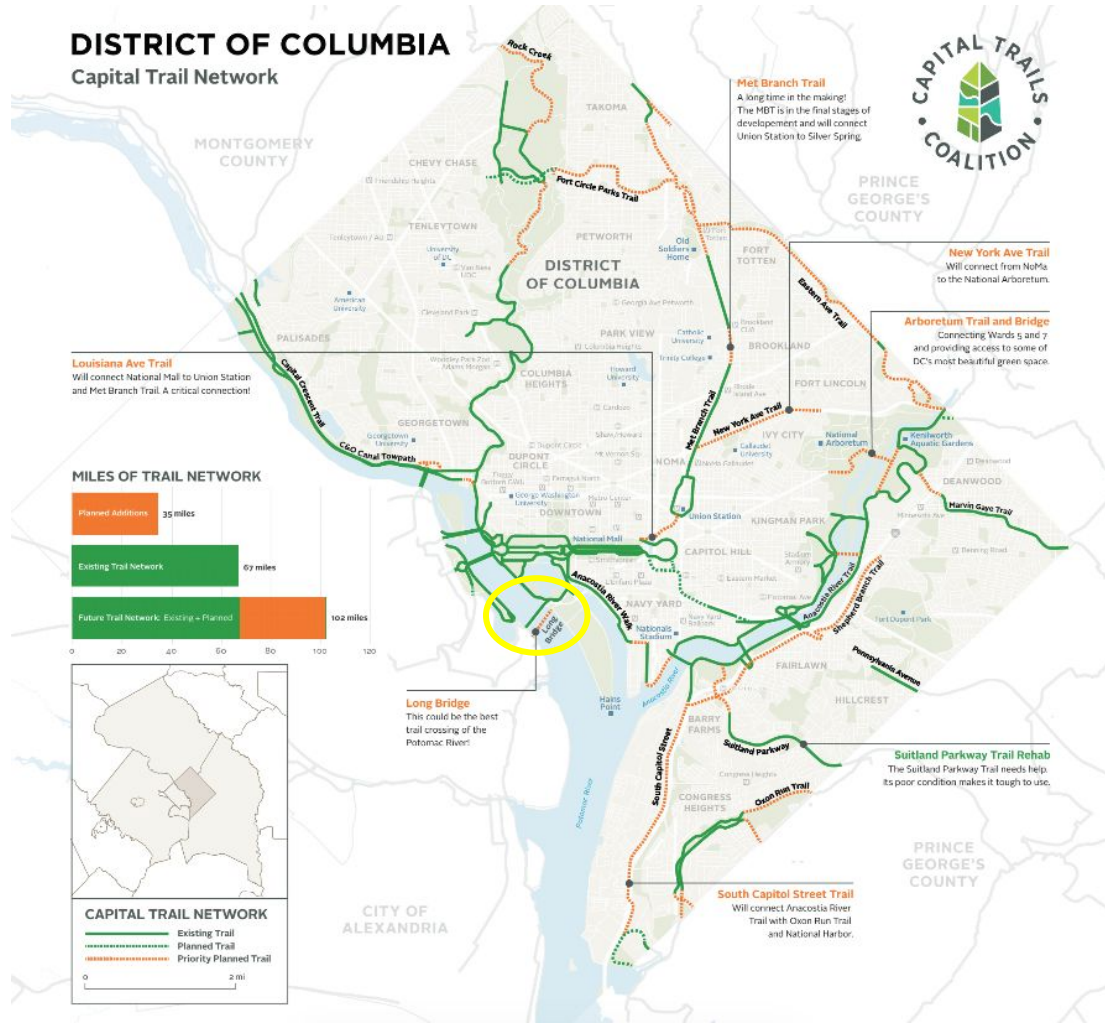
Arlington Boulevard Trail

This thoroughfare connects more than 100,000 people living in adjacent neighborhoods!

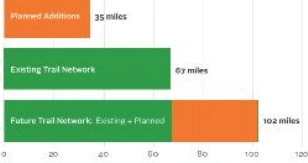


DISTRICT OF COLUMBIA

Capital Trail Network



MILES OF TRAIL NETWORK

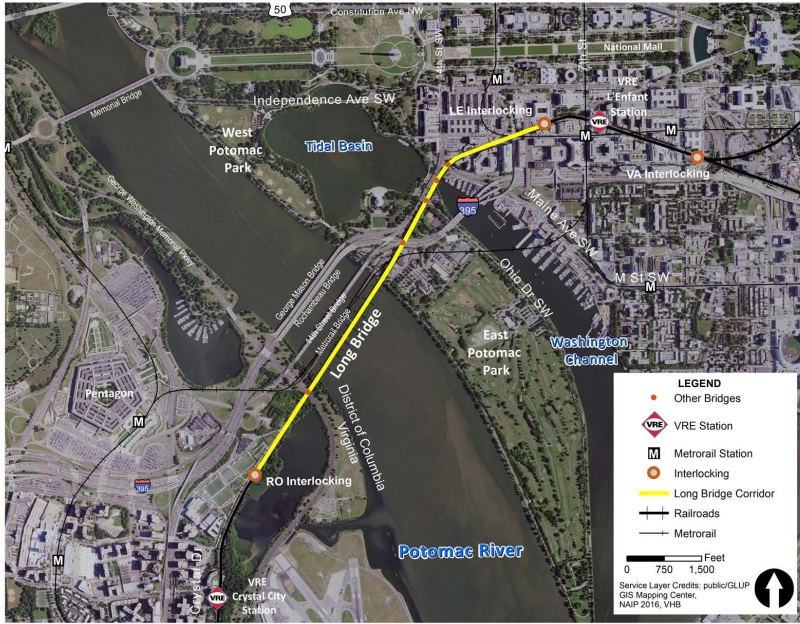


CAPITAL TRAIL NETWORK

- Existing Trail
- Planned Trail
- Priority Planned Trail

0 2 mi

What is the project?



- The Long Bridge Project will rehab an aging rail connection between DC and Crystal City, over the Potomac River.
- Existing two-track railroad bridge is owned by CSX and serves freight, Amtrak, and commuter rail (VRE).
- Study area is 1.8 miles long.
- The mitigation measure for the rail improvements is a new bike-pedestrian crossing.

Major Milestones

- **2016:** FRA awarded DDOT a Transportation Investment Generating Economic Recovery (TIGER) grant for preparation of an Environmental Impact Statement (EIS)
- **January 2018:** Alternatives Development Report published
 - Showed overwhelming public support for the bike-ped crossing
- **September 2019:** Draft Environmental Impact Study (DEIS) published
 - Bike-pedestrian crossing was included as a mitigation measure for the rail components of the project.
- **October 2019:** Public hearings

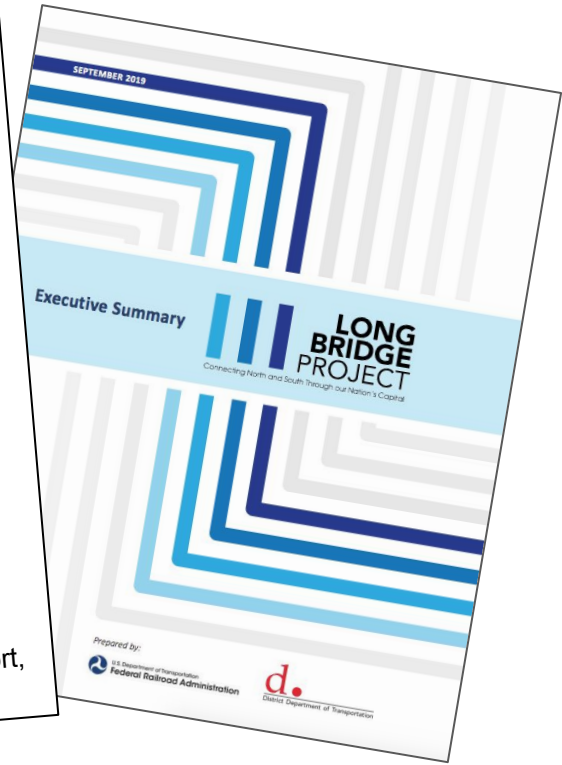
1,604

Number of people who commented **in support** of the bike-pedestrian crossing

1

Number of people who commented **in opposition** to the bike-pedestrian crossing

Source: Alternatives Development Report, June 2018



What's notable or exciting about the project?

- This could be the best bike-ped crossing of the Potomac River!
- Anticipated increased trail demand with the growth of SW DC and Crystal City / National Landing (Amazon HQ2, etc.)
- Increased resilience in the trail network as other bridges come on/offline during construction, special events or repairs.
- Support from elected officials on both sides of the river.

What does Long Bridge need from the Capital Trails Coalition?

- Continued positive support of the bike-ped crossing to implementing agencies
- More, and consistent, trail count and Long Bridge Park use data
- Continued coordination b/w fed. Agencies, developers, community groups
- Support for a continuous and logical connection on the DC side of the river.

