

# New York Avenue Trail

## Capital Trails Symposium

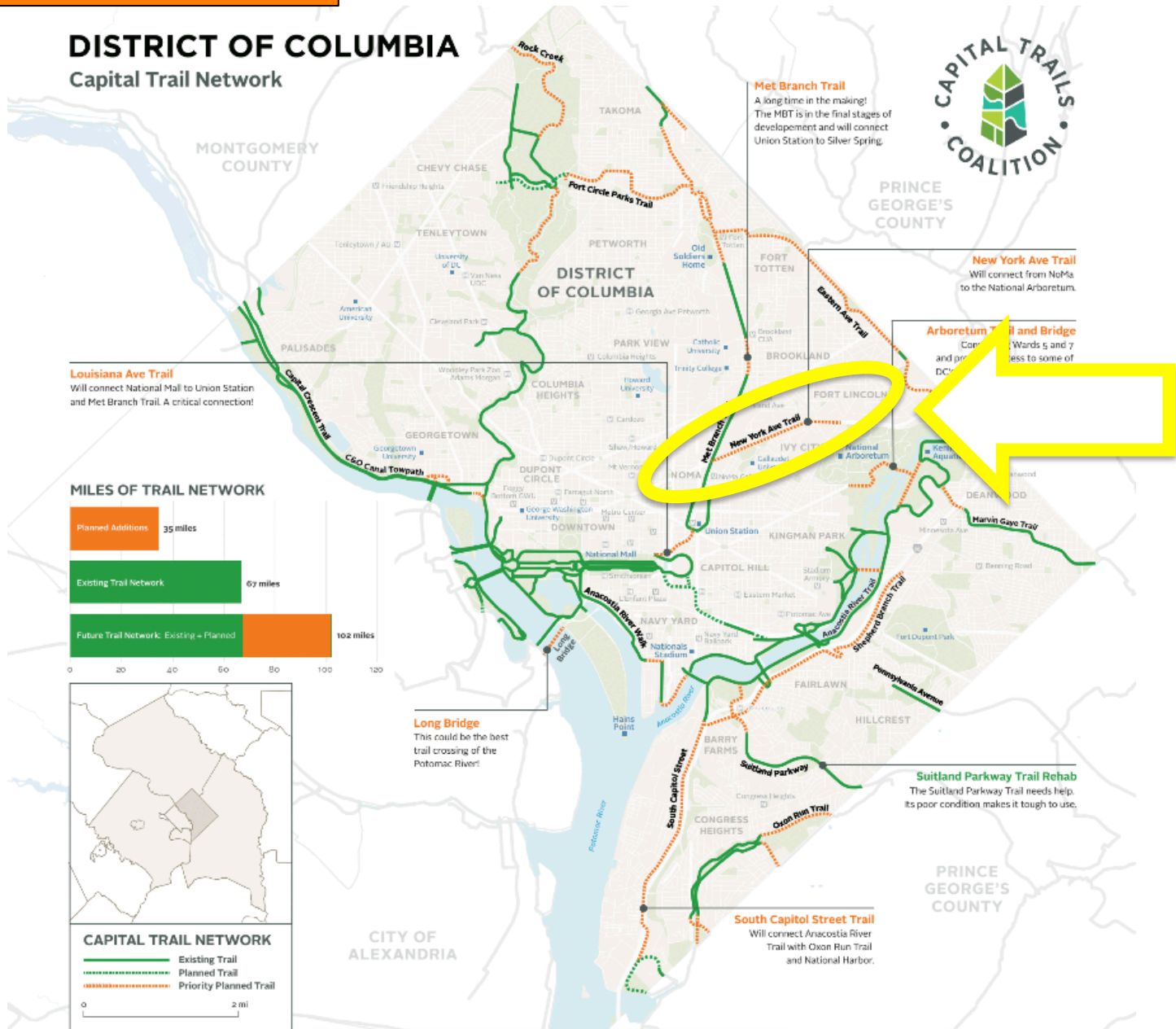


Tony Goodman  
November 14, 2019

# New York Avenue Trail

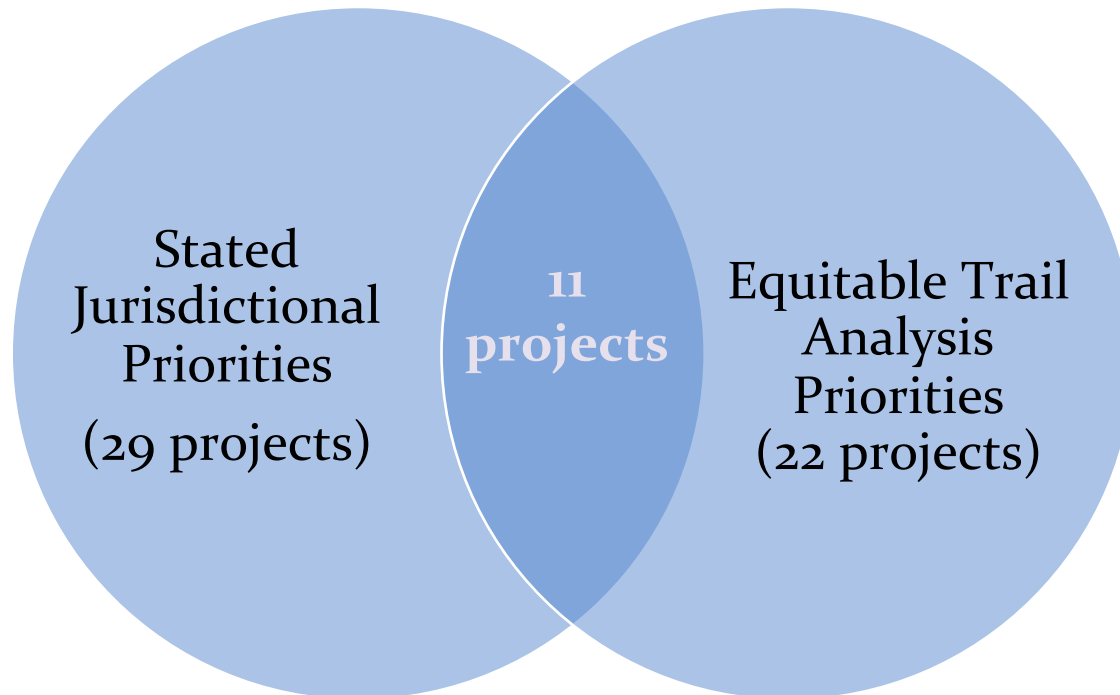
## Capital Trails Symposium

# Area Map



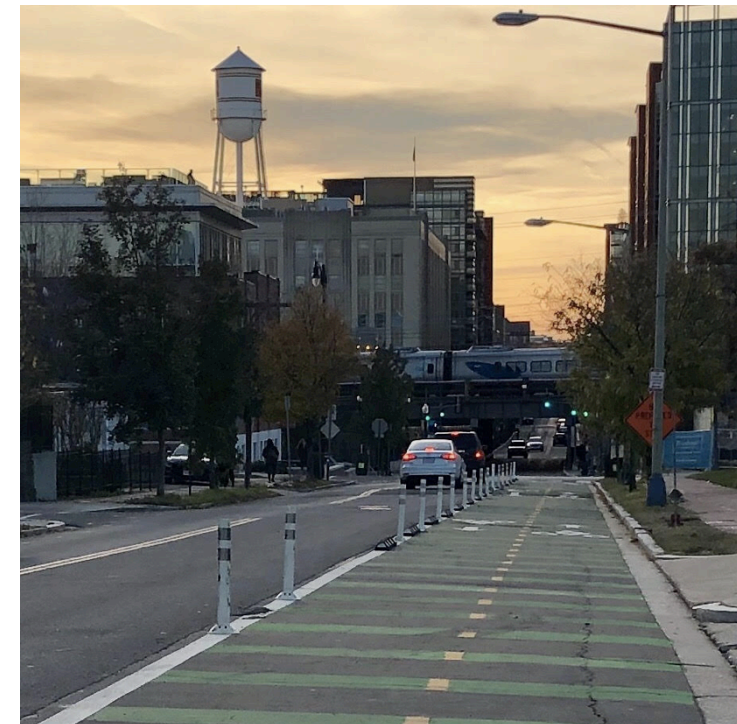
## Project Description

*1.7 miles connecting the Metropolitan Branch Trail to the National Arboretum, with the historically underserved Ivy City neighborhood in between. Most of the trail will parallel 6 lane New York Avenue NE, primarily within the 130 foot DDOT ROW.*





- 2005 Included in DDOT's DC Bike Master Plan
- 2015 Rails to Trails Consortium Feasibility Study
- 2017 DDOT New York Avenue Streetscape & Trail Study
- 2017 M/4<sup>th</sup> NE cycletracks built from NoMa to Union Market
- 2019 Trail Design/Construction included in FY20 & FY21 DC budgets
- 2020 Douglas Development planning to build Eastern section
- 2021 VRE Mid-Day Storage Facility Construction





# Existing Conditions



130' DDOT ROW includes 10-30+ feet North of the curb, a combination of sloped woods & parking lots. Amtrak has an additional 30+ feet vacant land that VRE will acquire and use for a mid-day storage facility.

VRE will acquire several properties that will partially be used for the trail, and will also build a retaining wall in the sloped areas.





# Pump Track Opportunity



Ivy City lacks parks, but the large width of the DDOT ROW could accommodate a 6-8+ foot wide asphalt “pump path” linear park.



Pump Path – Pineville, MO  
Designed/built by Velosolutions

# Next Steps & Advocacy Needs

- Plan for convenient connections to the MBT & Arboretum
- Route through Union Market area
- Safe pedestrian & bicycle paths within Ivy City
- Planning for Eastern extension to the Anacostia and/or Fort Lincoln
- Potential protected lanes on West Virginia & Bladensburg
- Support for pump path and other active amenities
- Track progress on VRE Mid Day Storage facility

