

ANNE ARUNDEL COUNTY & PRINCE GEORGE'S COUNTY, MARYLAND WB&A TRAIL - BRIDGE AT PATUXENT RIVER

PROJECT NO. P393600, CONTRACT NO. P393608

90% DESIGN REVIEW SUBMISSION

OCTOBER 15, 2019



LOCATION MAP
SCALE: 1"=500'

INDEX OF DRAWINGS

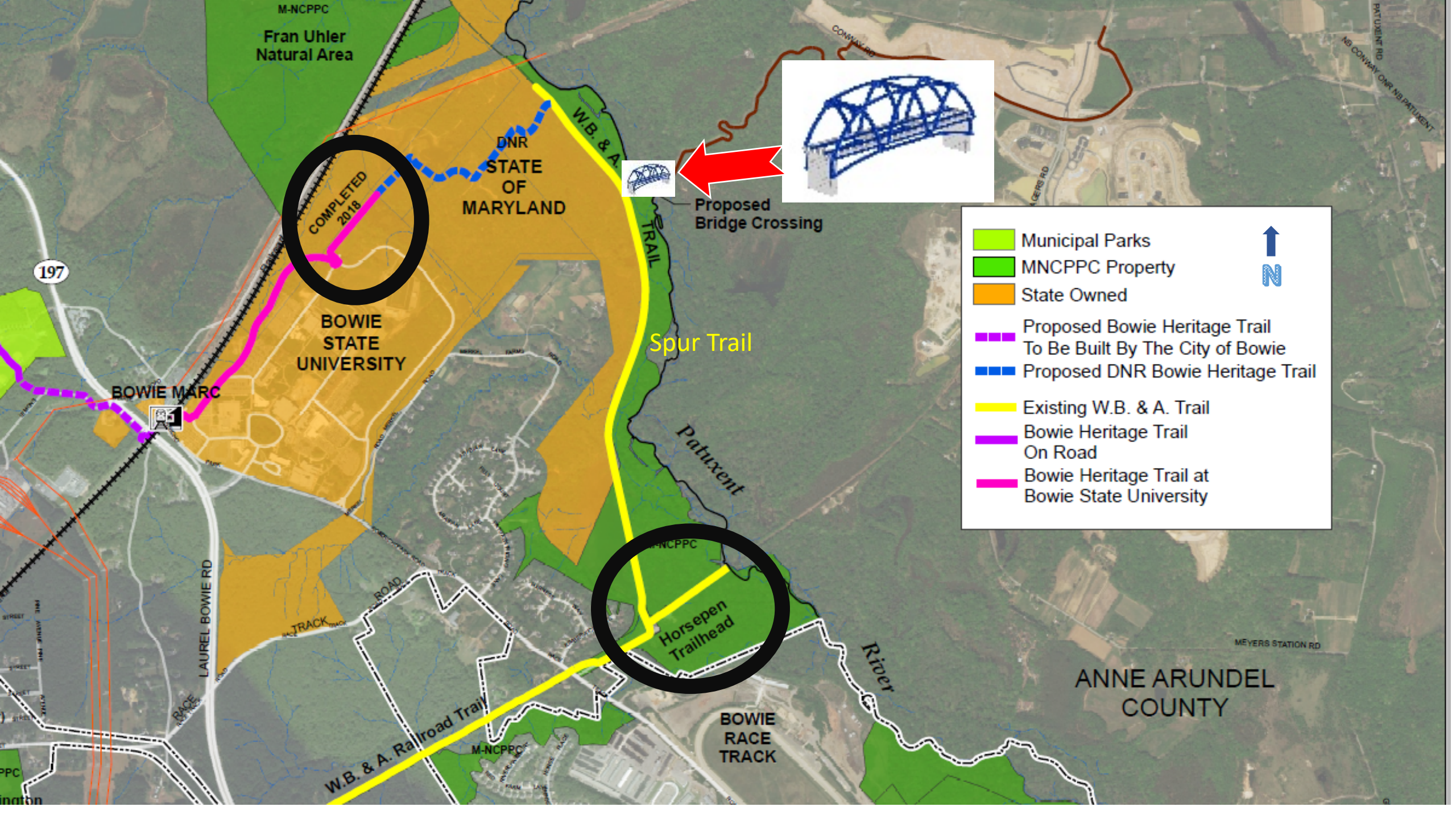
NO. OF SHEETS	SHEET TITLE
1	OVERALL PROJECT
16	ANNE ARUNDEL SITE, GRADING
16	PRINCE GEORGE'S SITE, GRADING
11	BRIDGE / SITE

W B and A Trail

Bridge Across
the Patuxent
River

Projected
Completion:

End of 2020 or
Spring 2021



Fran Uhler
Natural Area

COMPLETED
2018

DNR
STATE OF
MARYLAND

BOWIE
STATE
UNIVERSITY

BOWIE MARC

Spur Trail

Horsepen
Trailhead

BOWIE
RACE
TRACK

ANNE ARUNDEL
COUNTY

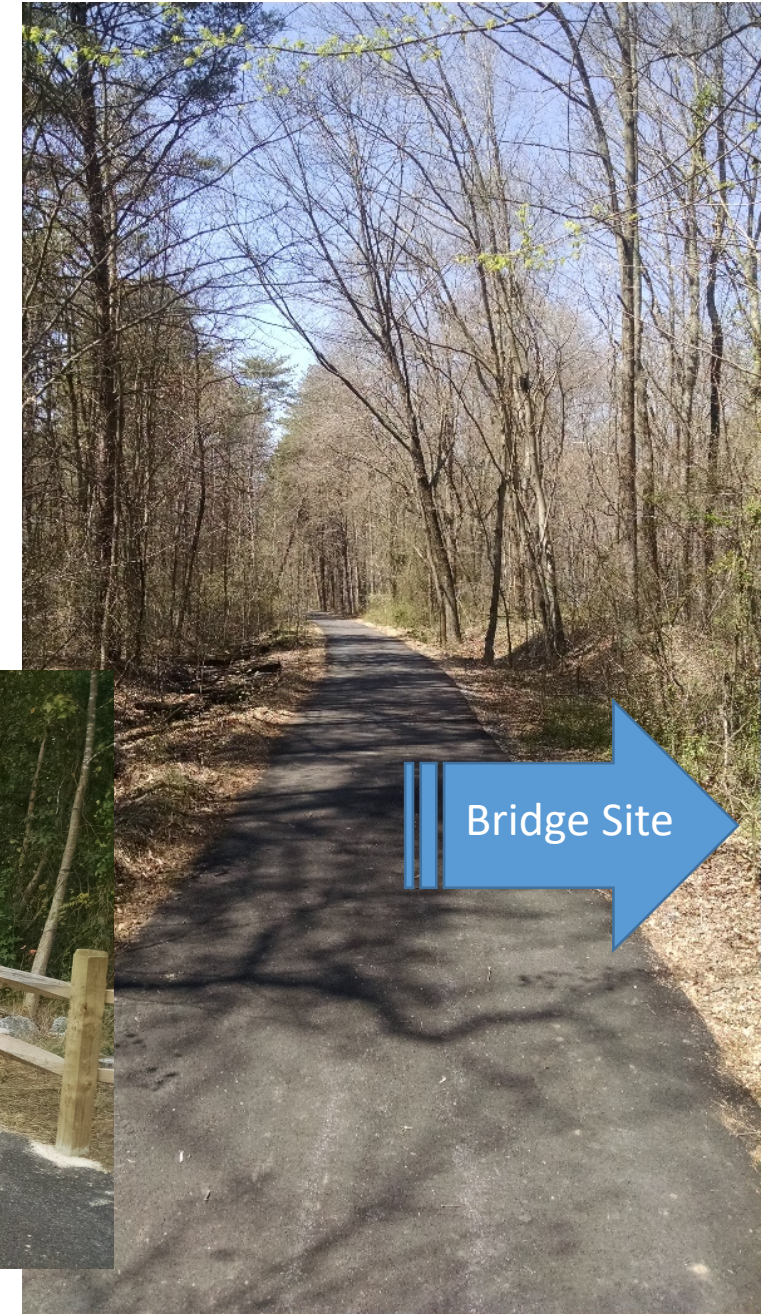
Proposed
Bridge Crossing

- Municipal Parks
- MNCPPC Property
- State Owned
- Proposed Bowie Heritage Trail
To Be Built By The City of Bowie
- Proposed DNR Bowie Heritage Trail
- Existing W.B. & A. Trail
- Bowie Heritage Trail
On Road
- Bowie Heritage Trail at
Bowie State University



WB&A Spur—Completed in 2016

Cost: \$700,000
1.3 miles long



Progress at Bowie State University--2018



Mountain Bike Skills Park (Horsepen Park) at Race Track Road Trailhead (Under Construction)

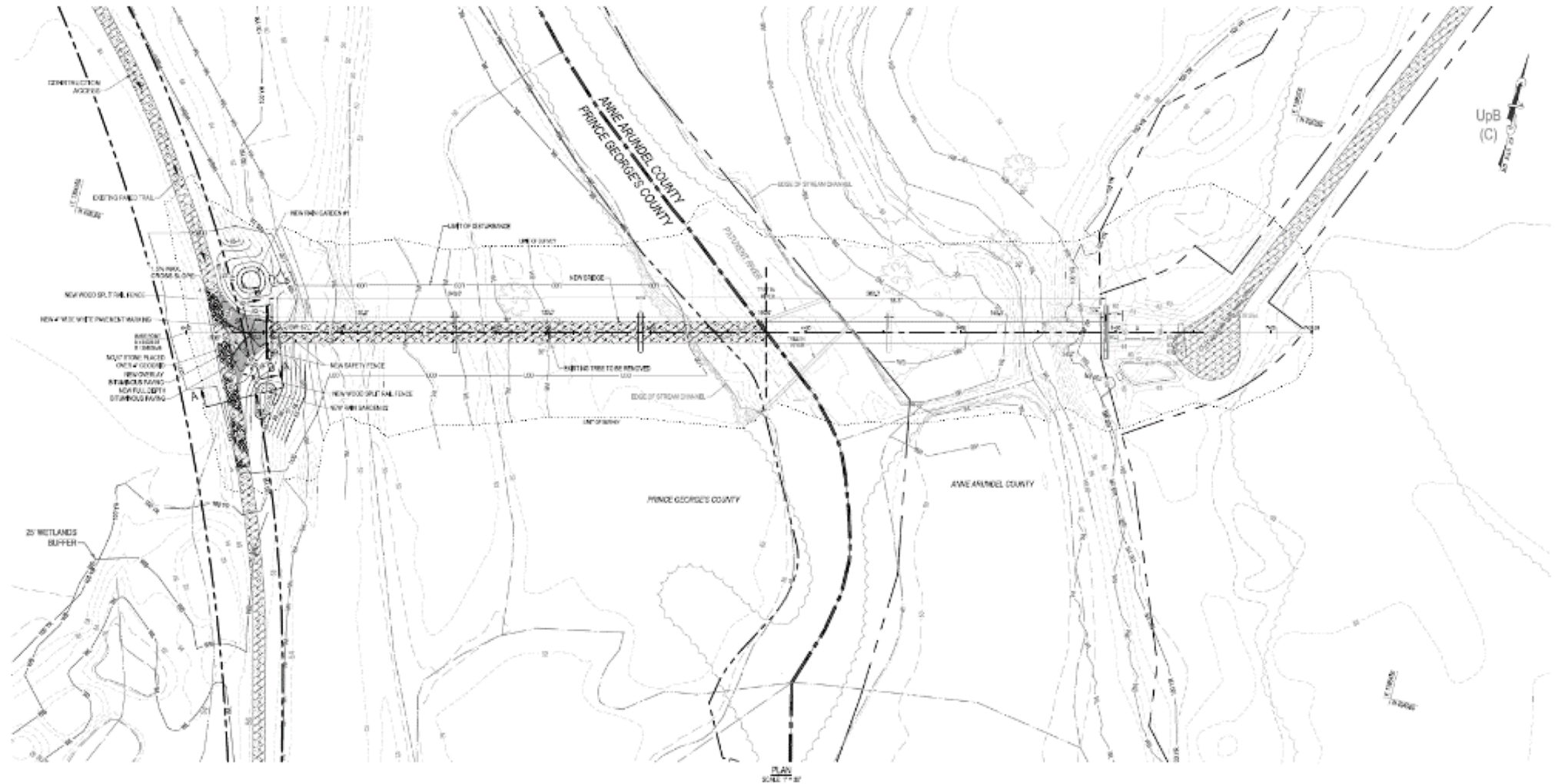


Anne Arundel County Trail to Bridge Site



95% Design Phase—Permitting Underway

Bridge 2/3 in Prince George's County





SCALE: 1/2" = 1'-0"