



Washington Area Bicyclist Association(WABA)

Montgomery County Purple Line Trails

Maricela Cordova, Purple Line Implementation Manager
Maricela.Cordova@montgomerycountymd.gov



Purple Line in Montgomery County



	BETHESDA METRO	CONNECTICUT AVENUE	LYTTONSVILLE	16TH STREET – WOODSIDE	SILVER SPRING METRO	SILVER SPRING LIBRARY	DALE DRIVE	MANCHESTER PLAC	LONG BRANCH	PINEY BRANCH ROAD	TAKOMA – LANGLEY
Platform Type	Center	Side	Center	Side	Side	Side	Center	Side	Side	Center	Center

- 16.2 mile-long light rail system from Bethesda to New Carrollton
- MTA P3 project with PLTP as Concessionaire
- 11 Purple Line Stations in Montgomery County, 2 reconstructed trails
- 95% Design Complete, 20-25% Construction Complete

Purple Line Connectivity

Capital Crescent Trail (CCT)

- CCT will be replaced by a 12-foot paved trail with 2-foot buffers
- Connects Bethesda with Silver Spring with Metropolitan Branch Trail and Green Trail
- Parallel to Purple Line - bridges over Connecticut Avenue, Rock Creek and Colesville Road and underpasses at Jones Mill Road, 16th Street and Spring Street

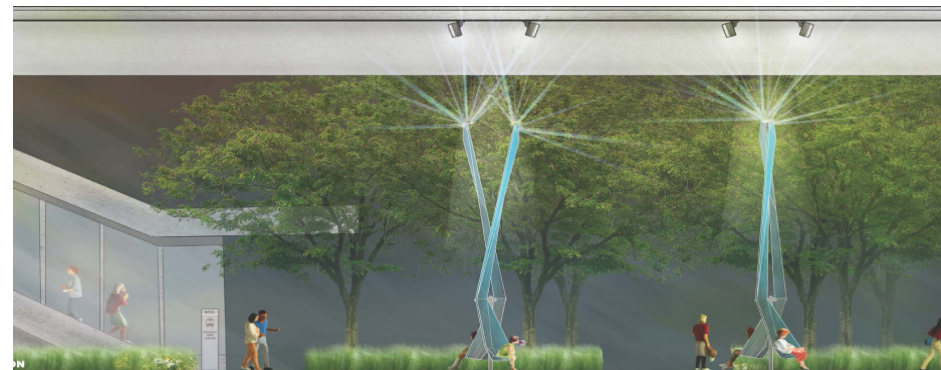
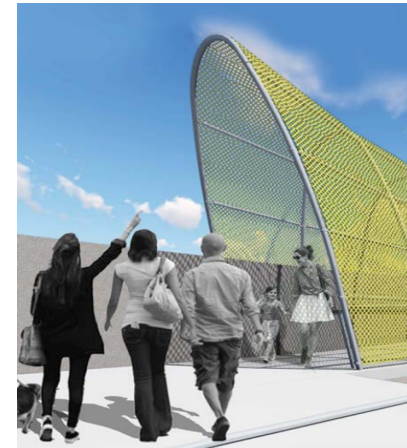
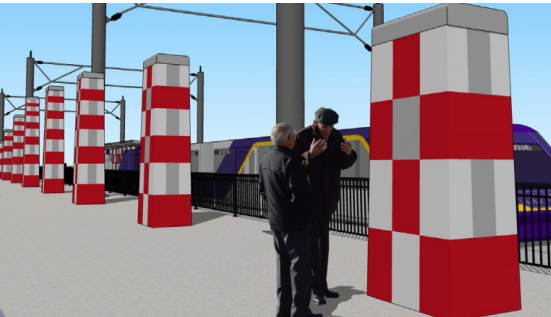
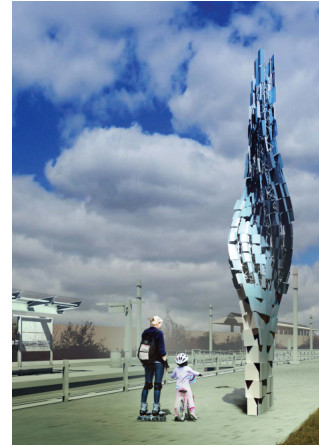


Silver Spring Green Trail

- Trail along Wayne Avenue to be completed between Sligo Creek and Fenton Street
- Trail is an 8-foot wide paved path with 2-foot shoulders along with lighting in the area of trail connections and landscaping



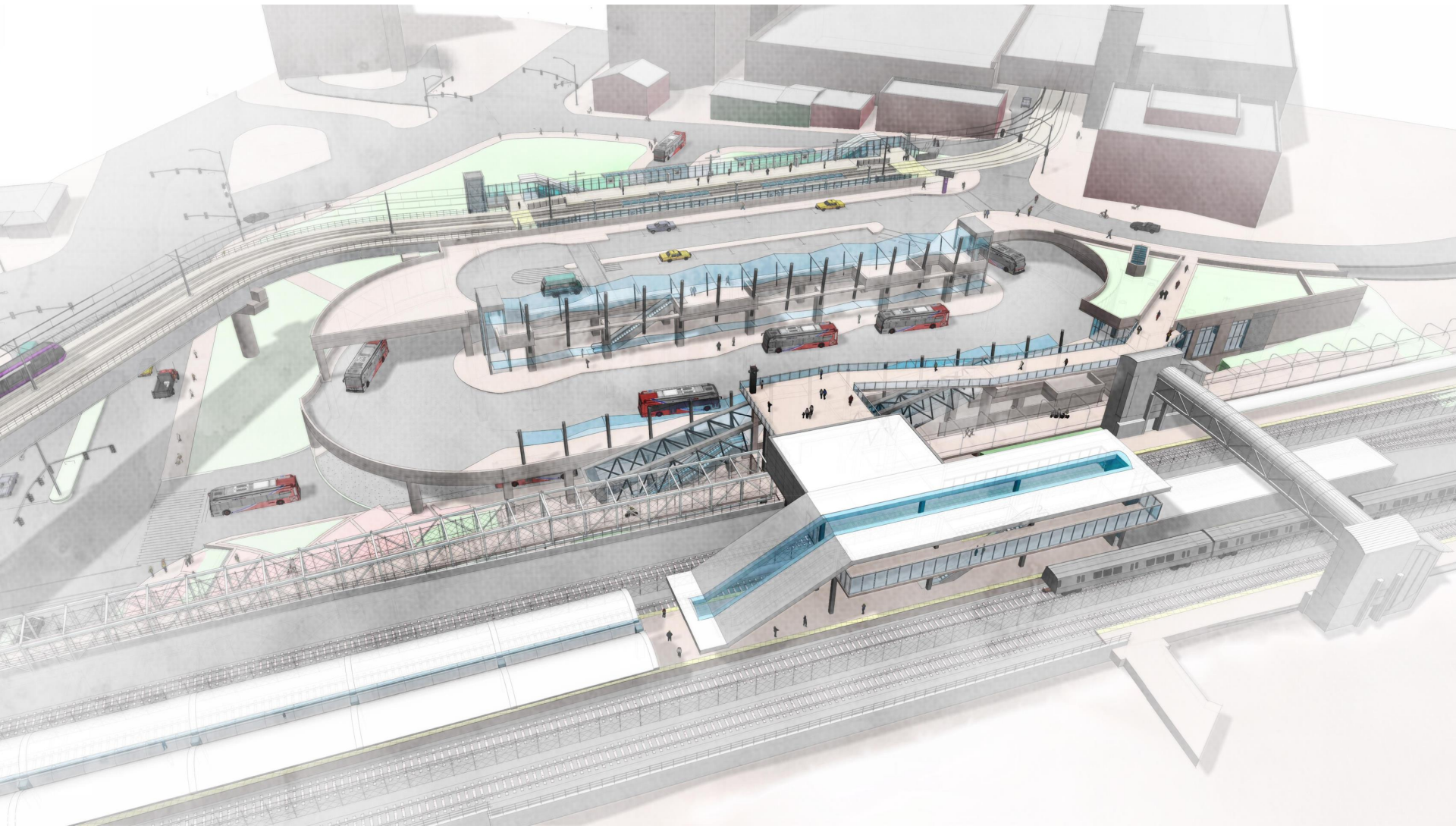
Purple Line Art in Transit Conceptual Design



Purple Line Upcoming Major Impacts – December 1st, 2019

Downtown Silver Spring

- Purple Line Light Rail Station, Metropolitan Branch Trail Connection, Capital Crescent Trail Bridge and Ramp, WMATA Entrance and Mezzanine



Learn More about Purple Line

Get Construction Updates at purplelinemd.com

- For construction-related questions and concerns, contact PLTC
- Email: outreach@pltcllc.com
- 24/7 hotline at 240-424-5325
- For general project questions and comments, contact MTA public outreach
- Email: outreach@purplelinemd.com
- Call: 443-451-3706 or 443-451-3705 (Para Español)



/MarylandPurpleLine



@PurpleLineMD