



# RHODE ISLAND AVENUE TROLLEY TRAIL

US 1 from Charles Armentrout Drive to Farragut Street



Margueritte A. Smith Clark  
Transportation Engineer, Office of Highway Development  
MDOT State Highway Administration  
[msmithclark@mdot.maryland.gov](mailto:msmithclark@mdot.maryland.gov)



# Rhode Island Avenue Trolley Trail



## Project Location

### CAPITAL TRAIL NETWORK

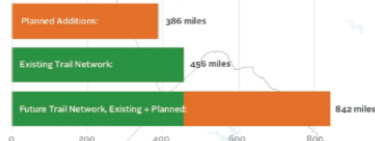
The **Capital Trails Coalition** is a collaboration of public and private organizations, agencies, and citizen volunteers working to advance completion of an interconnected network of multi-use trails for metropolitan Washington, DC. Started in 2016, the Coalition has worked with each jurisdiction to identify 187 planned trails that, once complete, will connect our region. The trails will be accessible to people of all ages and abilities, and will be developed and distributed equitably.



**Capital Crescent Trail**  
This trail will run along the Purple Line and connect Bethesda to Silver Spring.

**I-66 Trail**  
This 16-mile segment would connect communities from Merrifield to Gainesville along I-66.

#### MILES OF TRAIL NETWORK



**Met Branch Trail**  
When completed, the MBT will connect Union Station with Silver Spring.

**Central Avenue Connector Trail**  
A trail along the Blue Line will benefit those who walk and bike to transit.

**Backlick Run Trail**  
This trail would extend the existing trail to the west, all the way to the Alexandria / Fairfax County line.

**Arlington Boulevard Trail**  
This thoroughfare connects more than 100,000 people living in adjacent neighborhoods.

### PRINCE GEORGE'S COUNTY Capital Trail Network

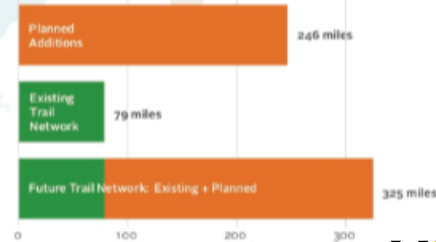


**Rhode Island Ave Trolley Trail**  
An extension of the Trolley Trail to connect to the NW Branch Trail.

**WB&A Trail Bridge**  
This bridge over the Patuxent River will connect the existing segments of the WB&A Trail.

**Central Avenue Connector Trail**  
A trail following the Blue Line to Largo.

#### MILES OF TRAIL NETWORK

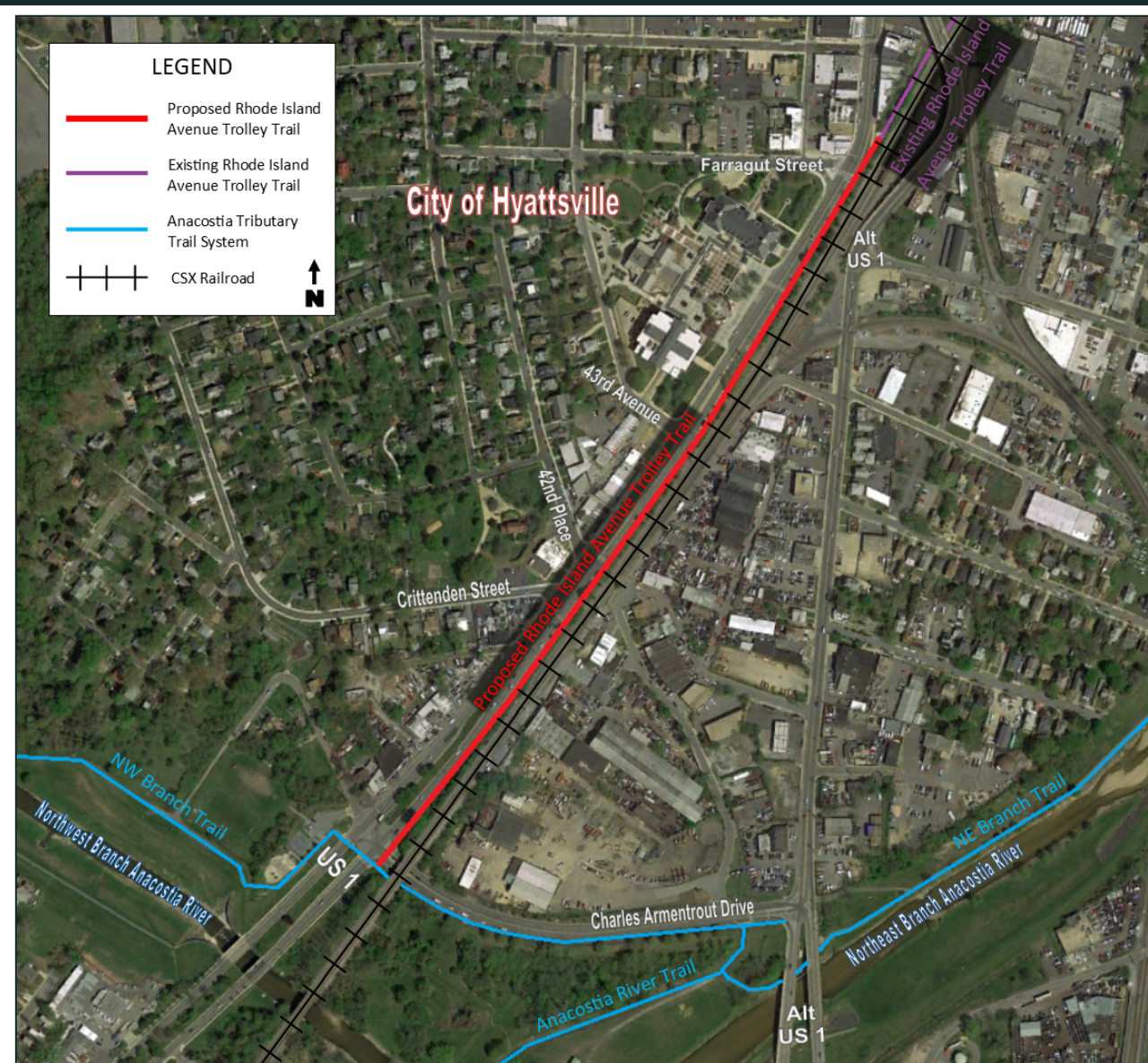




# Rhode Island Avenue Trolley Trail



## Project Description



- The proposed Rhode Island Avenue Trolley Trail extension is a 10-foot shared-use path along Northbound US 1 (Rhode Island Ave.) from Charles Armentrout Dr. to Farragut St.
- The trail fills the 0.54-mile gap between the existing Rhode Island Avenue Trolley Trail and the Anacostia Tributary Trail.

# Rhode Island Avenue Trolley Trail

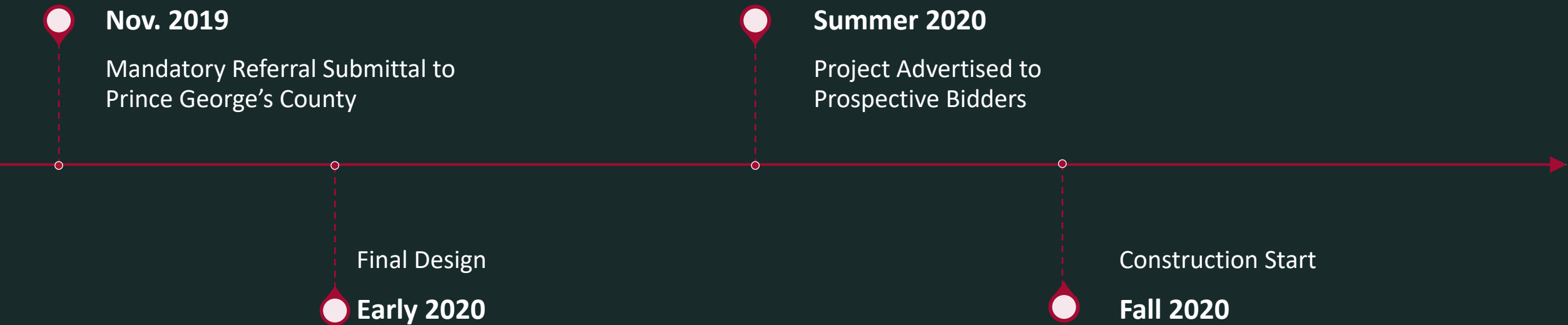
## Milestones to Date





# Rhode Island Avenue Trolley Trail

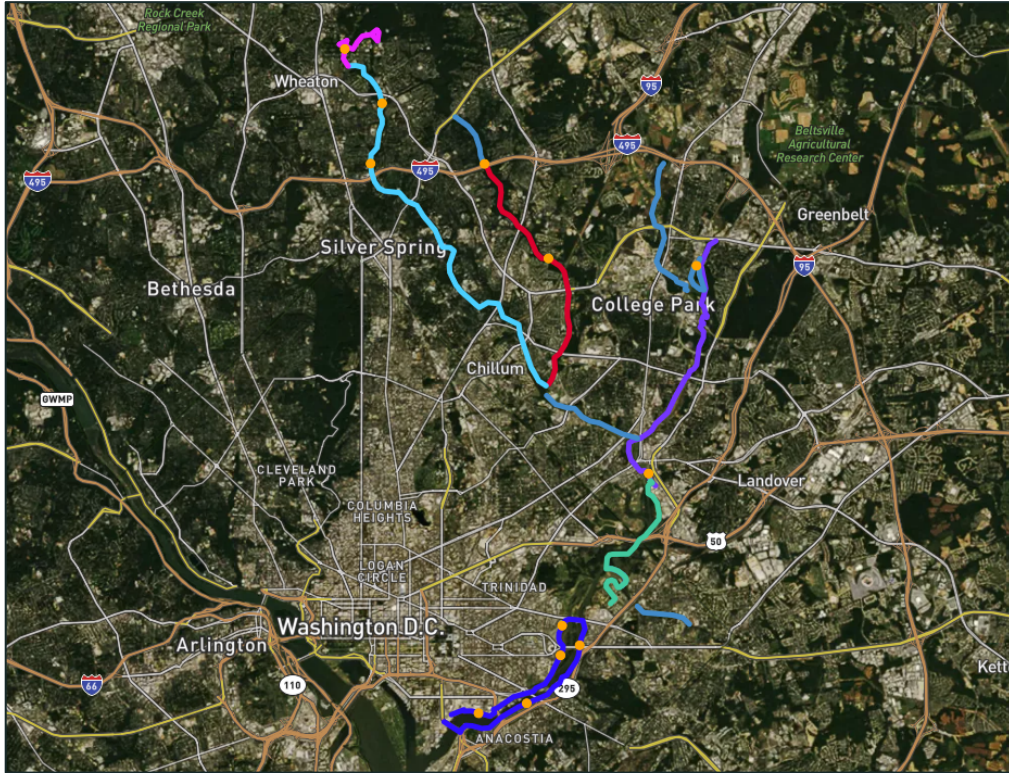
## Next Milestones



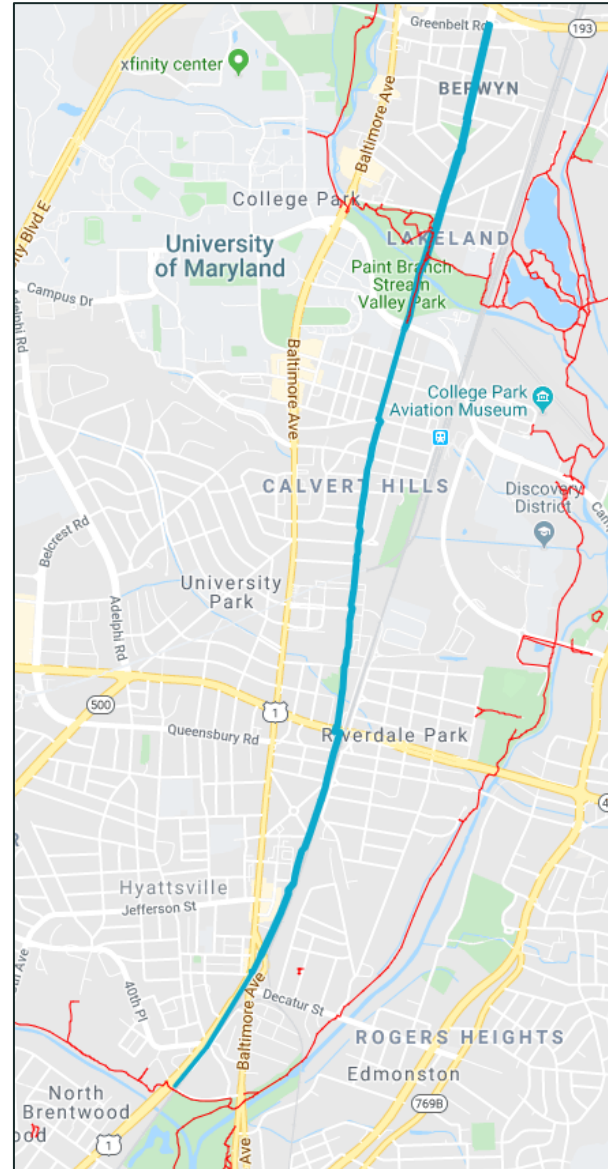
# Rhode Island Avenue Trolley Trail



## What's notable? - Project Connections



- The **Anacostia Tributary Trail System** is part of the East Coast Greenway with 3,000 miles of trails connecting from Florida to Maine.



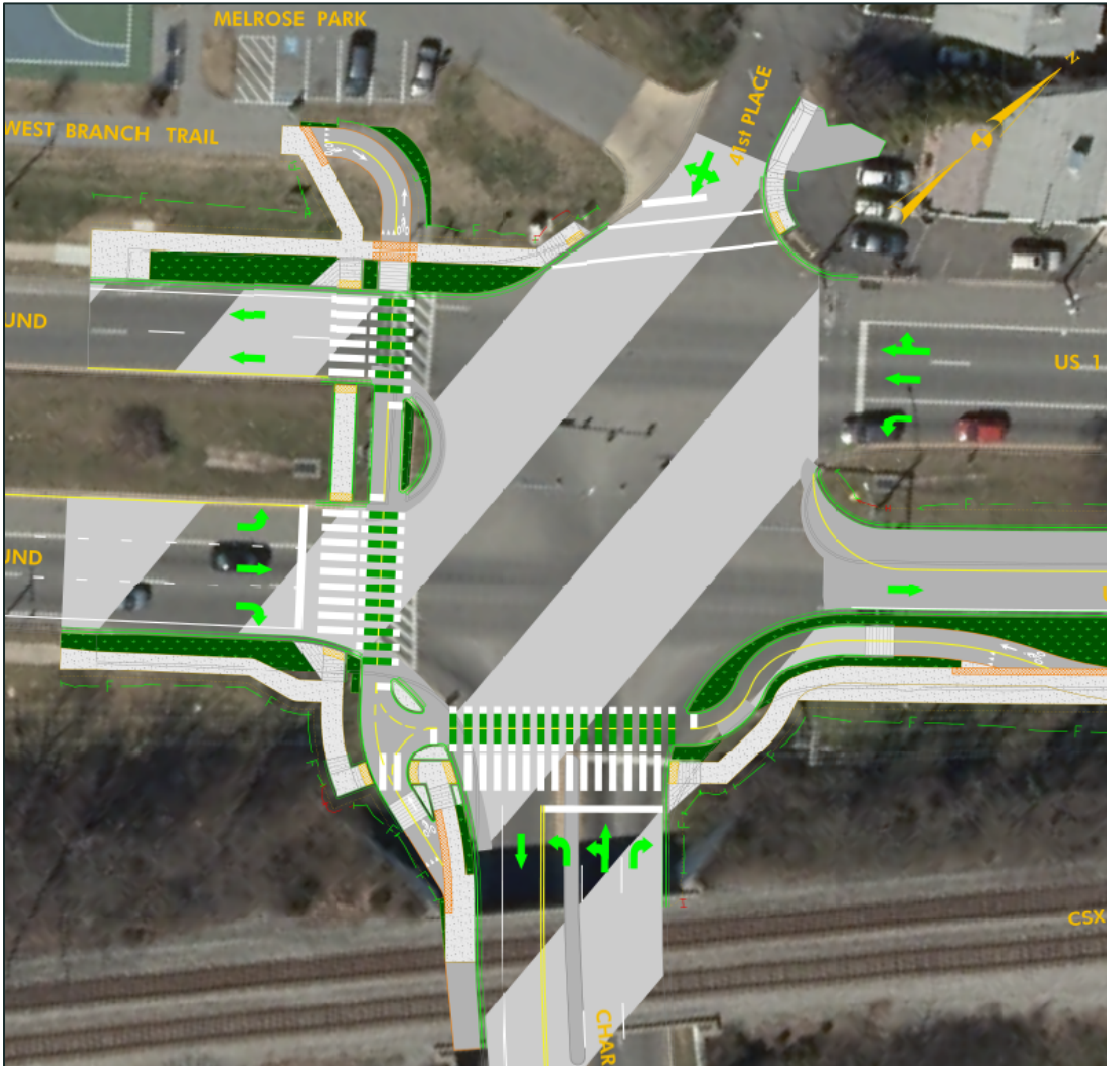
- The **Rhode Island Avenue Trolley Trail** is a 3.8-mile-long trail that connects College Park, Riverdale and Hyattsville.
- The Trolley Trail is named after the streetcar line that ran along this route from DC to Laurel (1902-1948)
- The trail has access to the Riverdale MARC station and the College Park - UMD Metro station.
- Connects to the Gateway Arts District (Mount Rainier, Brentwood and Hyattsville).



# Rhode Island Avenue Trolley Trail



## What's Exciting?



- Separate facilities for pedestrians and bicyclists at the intersection where both trails meet.
- Road Diet on northbound US 1
- Multi-agency coordination between MDOT SHA, City of Hyattsville and M-NCPPC

# Rhode Island Avenue Trolley Trail

🚶 What do we need from Capital Trails Coalition?

Your continued support!

