

# East Coast Greenway

A group of people, mostly wearing blue shirts, are walking along a paved trail that curves through a lush green landscape. The trail is bordered by grass and trees. In the foreground, a person in a blue shirt and a pink face mask is walking towards the camera. A blue trash can is visible on the left side of the trail. The background shows more people walking further down the path under a bright sky.

*Progress Update for*  
**Maryland and Washington, DC**

*Montgomery Explorers &  
Prince George's County Club 300  
Anacostia River Trail*



# Agenda

- Introductions  
(*in chat: name, org, geography*)
- ECG overview
- State Committee request
- Updates by jurisdiction
  - Washington, DC
  - Prince George's
  - Anne Arundel
  - Baltimore City
  - Baltimore
  - Harford
  - Cecil



WB&A Trail

# East Coast Greenway

*Connecting People to Place*

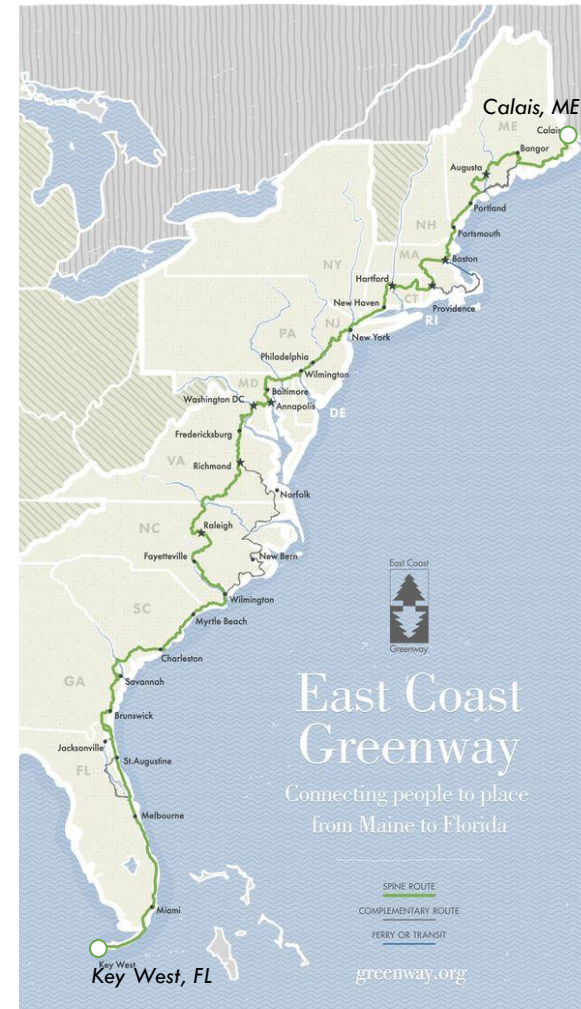


**3,000-mile biking & walking trail** in development from Maine to Florida

**Create safe, equitable access** to an improved quality of life for all

**Bring people together** around open space and community engagement

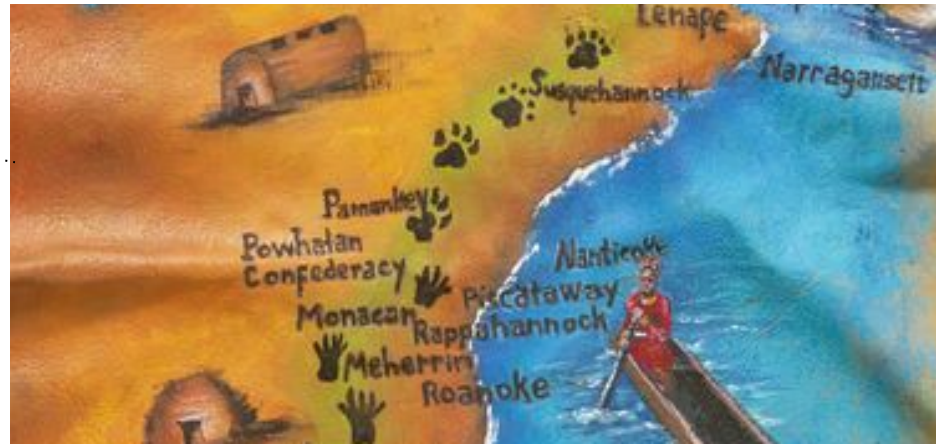
Greenway design criteria: [greenway.org/design-guide](https://greenway.org/design-guide)





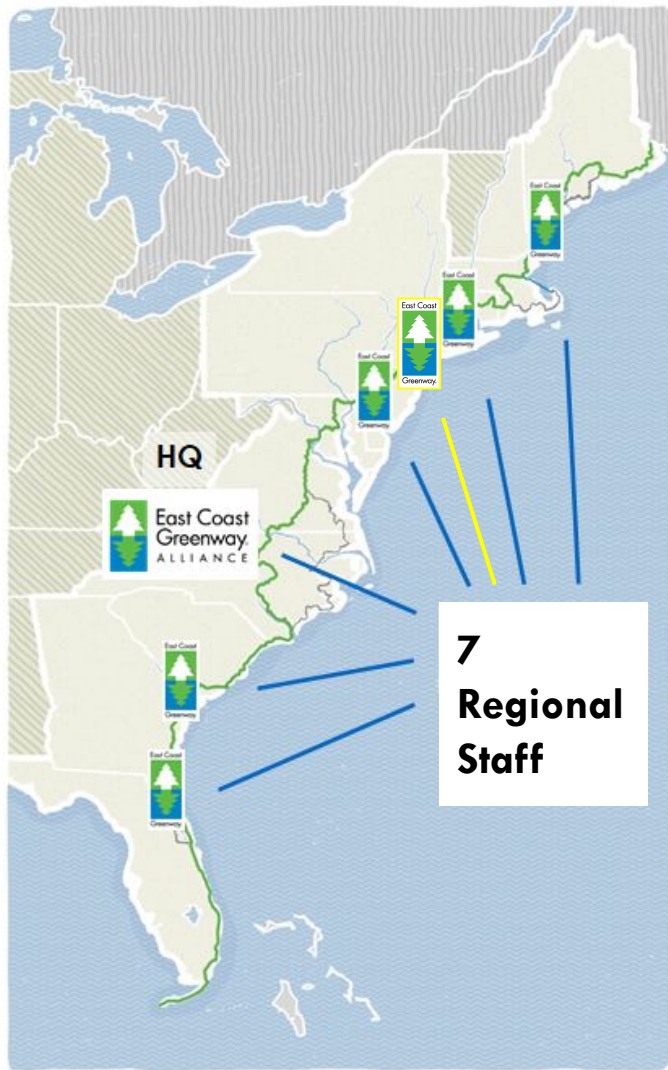
The East Coast Greenway follows paths on land originally inhabited by Indigenous Native Americans.

This includes the ancestral homeland of the **Susquehannock, Nanticoke, Piscataway, and Nacotchtank (Anacostan)**, across what is now Maryland and DC



Deerskin painting by Karen Harley,  
a Haliwa-Saponi Indian





East Coast  
Greenway®  
ALLIANCE

**Partners** with local, state, and national agencies and organizations to...

**Advocate, plan, and promote** the development, stewardship, and public enjoyment the East Coast Greenway



# East Coast Greenway progress:

**1,028 miles** of trail, **35%** complete

- \$100 million invested in 2020
- 23 new segments totaling 31 miles in 2020

*Will it be **years or decades?***

*(We have to accelerate investment in trails!)*



# East Coast Greenway

## Maryland:

**35% complete, 58 mi trail (of 174 mi)**

## Washington, DC:

**82% complete, 16 mi trail (of 19.5 mi)**



Northern Delaware Greenway  
**Wilmington**

Newark

James F. Hall Trail

Jack A. Markell Trail

Elkton

Havre de Grace

Bel Air  
Ma & Pa Trail

Towson

Jones Falls Trail

**Baltimore**

Middle Branch Trail

BWI Trail

Odenton

WB&A Trail

B&A Trail  
South Shore Trail

**Annapolis**

Met Branch Trail  
ATTS

National Mall

Anacostia River Trail

**DC**

Mt Vernon Trail

Rt 1 Sidepath

## Delaware:

**71% complete  
27.2 miles of trail  
(of 38.1 mi)**

## BAL - ANN - DC:

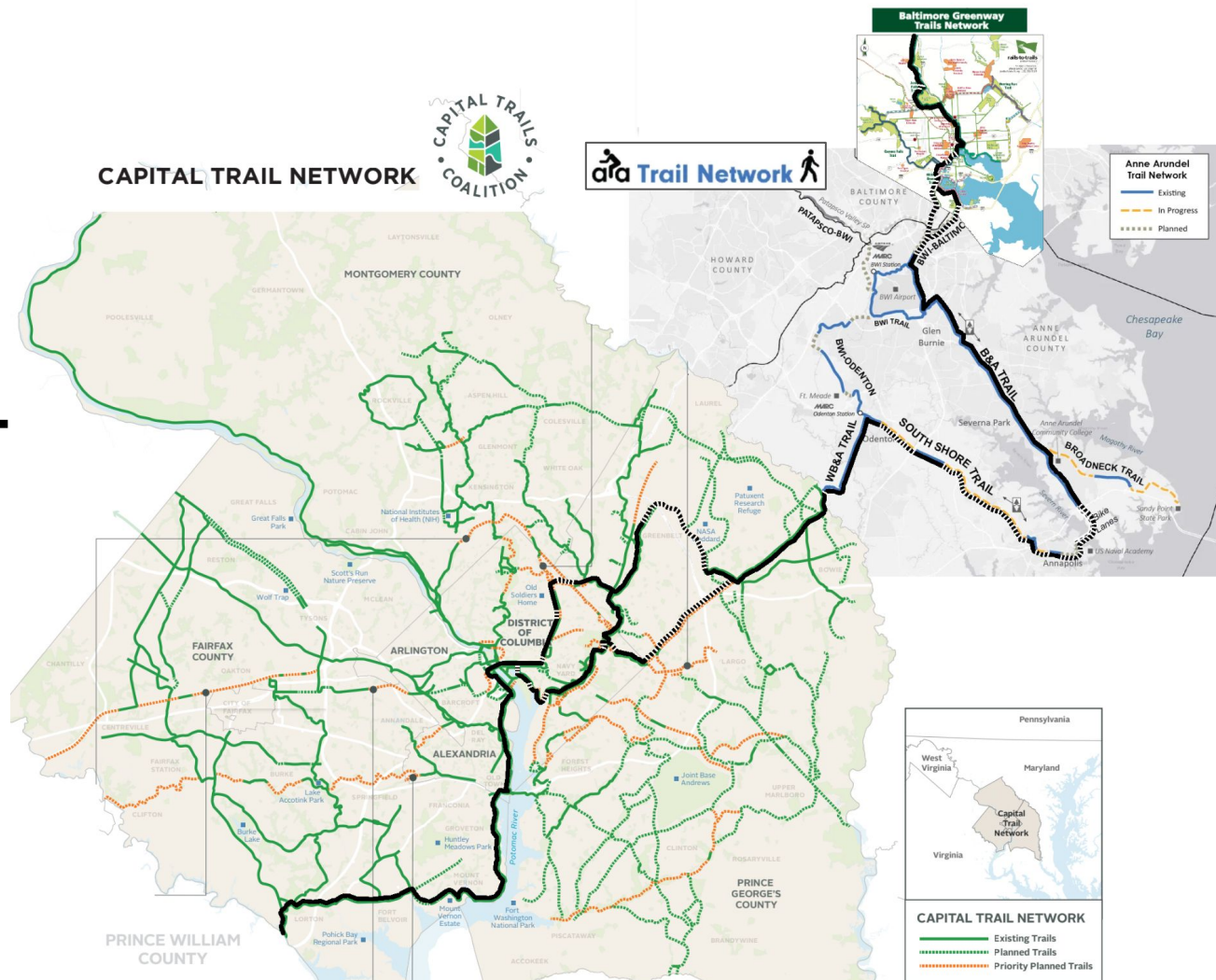
**68% complete  
74 miles of trail (of 108 mi)**

### East Coast Greenway

- COMPLETED ECG TRAIL (WIDE LINE)
- FUTURE ECG TRAIL CORRIDOR (DASHED)

# DC-ANN-BAL

## Multi-metro Trail Network

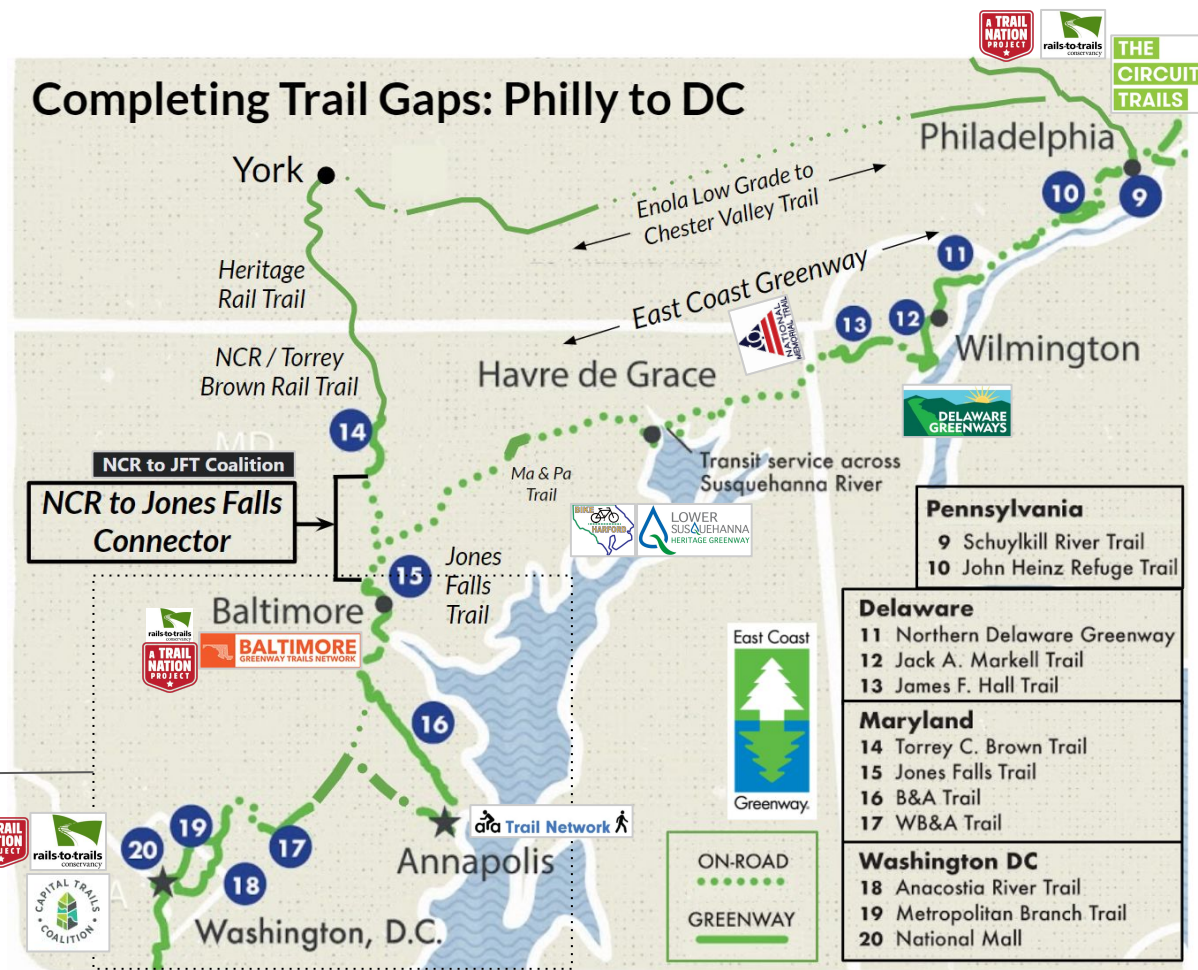
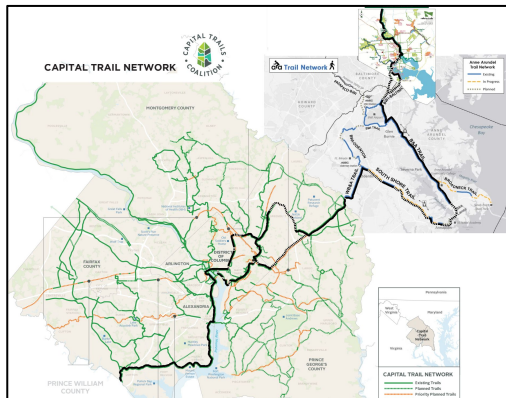




# DC-MD-DE-PA

## Multi-state Trail Network & Coalitions

### DC-ANN-BAL



Ballenger Creek

Mount Airy

East Coast



Greenway.

## Washington, DC - Baltimore, MD:

68% complete

74 miles of trail (of 108 mi)

- 1) DC closing ART & Met Branch Trail gaps
- 2) WB&A Trail Patuxent River Bridge
- 3) Baltimore closing JFT & MBT gaps

Germantown

Redland

Olney

Travilah

shburn

Sterling

Potomac

Reston

McLean

SILVER SPRING

College Park

Chillum

National Mall

Met Branch Trail

Landover

WASHINGTON D.C.

Mt Vernon Trail

Anacostia River Trail

Suitland



WB&A Trail Bridge  
(out to bid!)

2

WB&A Trail

Odenton

Severn

Glen Burnie

BWI Trail

Middle Branch Trail

Patapsco River

Pasadena

Severna Park

East Coast Greenway

- COMPLETED ECG TRAIL (WIDE LINE)
- FUTURE ECG TRAIL CORRIDOR (DASHED)
- INTERIM ROUTE TRAIL (THIN LINE)
- INTERIM ROUTE ON ROAD

Frederick  
Douglass  
Bridge Paths



Pikesville

Parkville

Jones Falls Trail

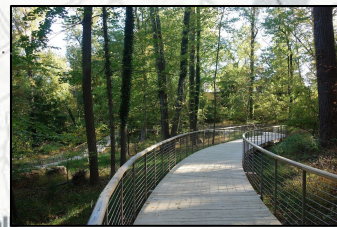
3

BALTIMORE

Ellicott City

COLUMBIA

Dundalk



Jones Falls Trail

Centreville

Annapolis

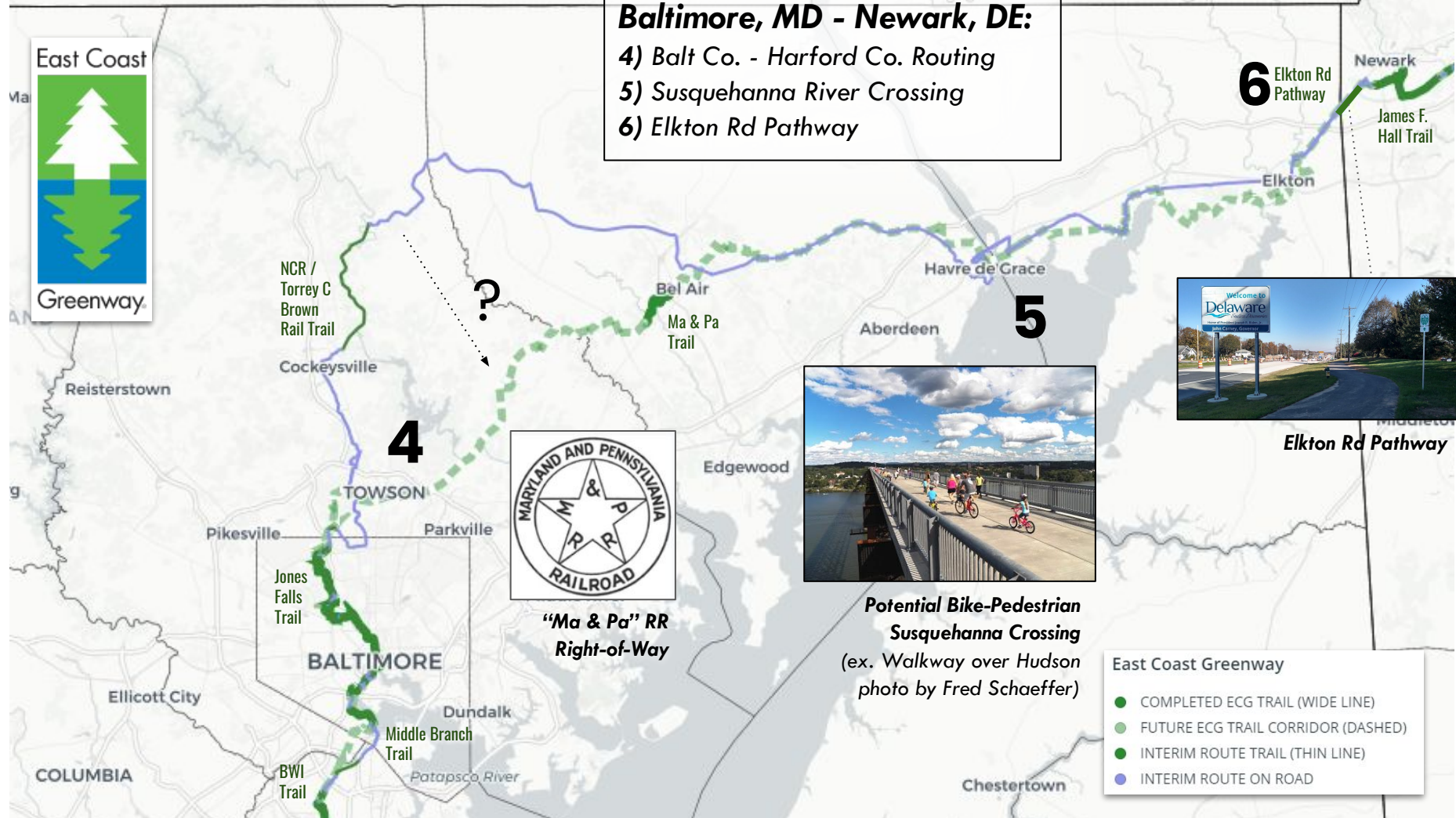
Eastern Bay





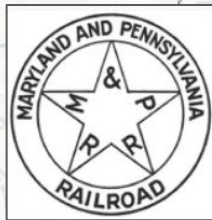
## Baltimore, MD - Newark, DE:

- 4) Balt Co. - Harford Co. Routing
- 5) Susquehanna River Crossing
- 6) Elkton Rd Pathway



?

4



"Ma & Pa" RR  
Right-of-Way

5

6

Elkton Rd  
Pathway

Newark

James F.  
Hall Trail

Elkton Rd Pathway



Potential Bike-Pedestrian  
Susquehanna Crossing  
(ex. Walkway over Hudson  
photo by Fred Schaeffer)

### East Coast Greenway

- COMPLETED ECG TRAIL (WIDE LINE)
- FUTURE ECG TRAIL CORRIDOR (DASHED)
- INTERIM ROUTE TRAIL (THIN LINE)
- INTERIM ROUTE ON ROAD

# MD & DC – East Coast Greenway

## State Committees

- Updates, Project Coordination
- Advocacy, Calls to Action
- Signage, Maintenance
- Routing, Inspections
- Events!

“Bal-Ann-Cap” Ride, ribbon cuttings,  
themed walks, birding, etc.

create your own!



**Interested in getting more involved?**

*email Daniel Paschall, Mid-Atlantic Manager, East Coast Greenway Alliance – [daniel@greenway.org](mailto:daniel@greenway.org)*



## Our Vision



The Capital Trails Coalition seeks to create a world-class network of multi-use trails that are equitably distributed throughout the Washington D.C. metropolitan region.

The regional trails network will transform public life by providing low-stress access to open space and reliable transportation for people of all ages and abilities.

Planned: 402 mi

Completed: 479 mi

Goal: 881 mi (54% to goal)



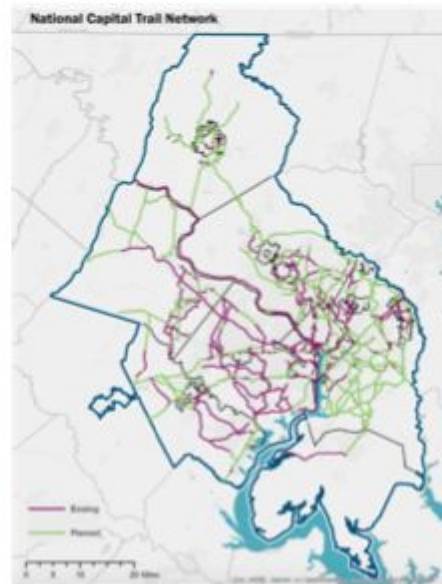
# TPB & COG Adopt National Capital Trail Network



- Used CTC's network as a foundation. New network has 1,400 miles of facilities (645 miles already exist)
- Prioritizes trail projects for funding
- Once completed, over 4 million people in the Washington region will have access to trails within ½ a mile of their home.



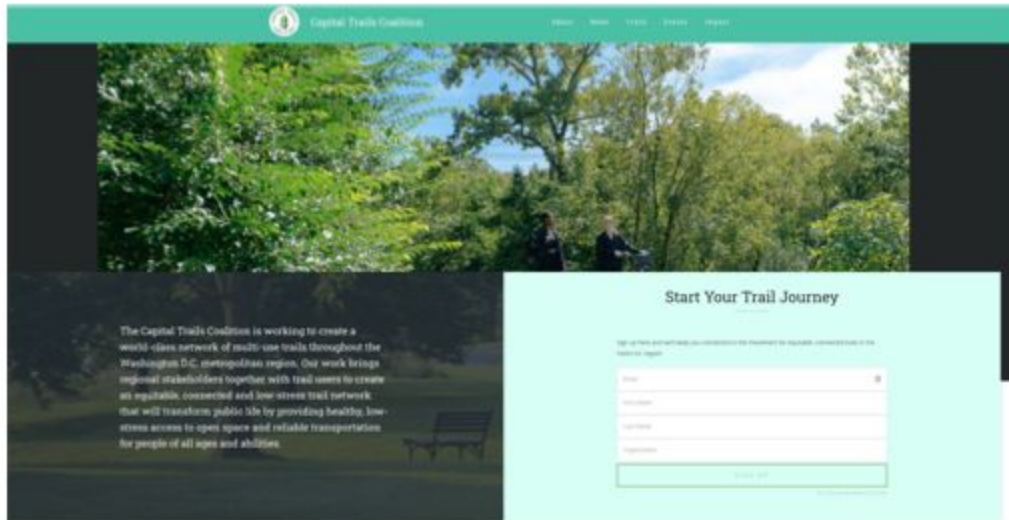
2018



2020



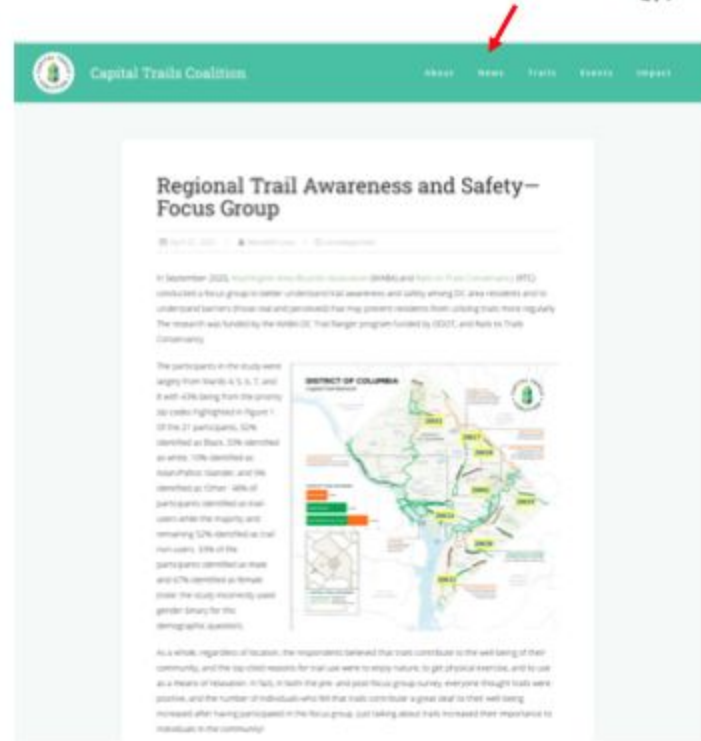
# Stay Connected!



<https://www.capitaltrailscoalition.org/>



@TrailsCoalition



# PRINCE GEORGE'S COUNTY



**Central Avenue Connector Trail**  
A trail following the Blue Line to Longwood

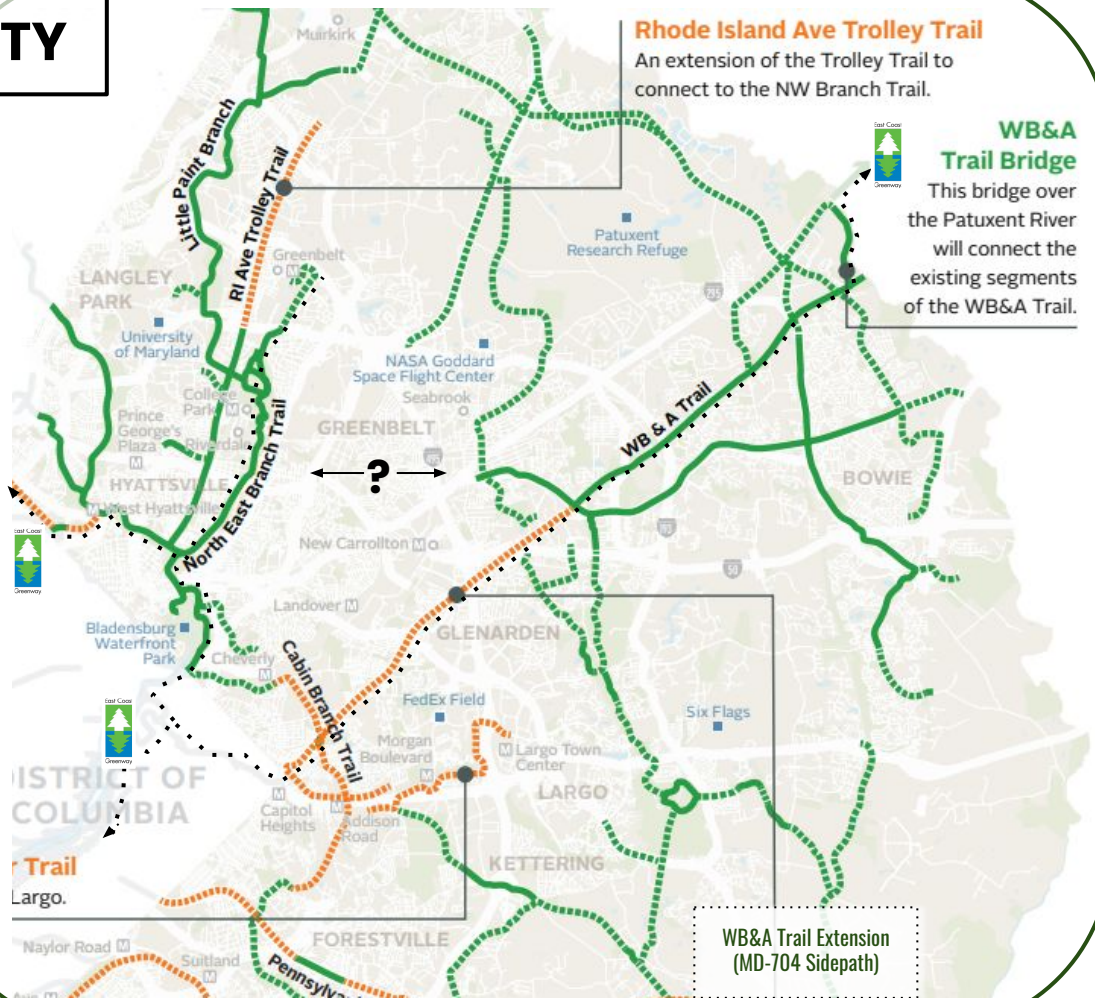
**Oxon Run Trail**  
Will provide biking and walking options for Forest Heights and Eastover, and will connect to the National Park

**WB&A Trail Extension**  
A safe way for walkers and bicyclists to get down MD 204



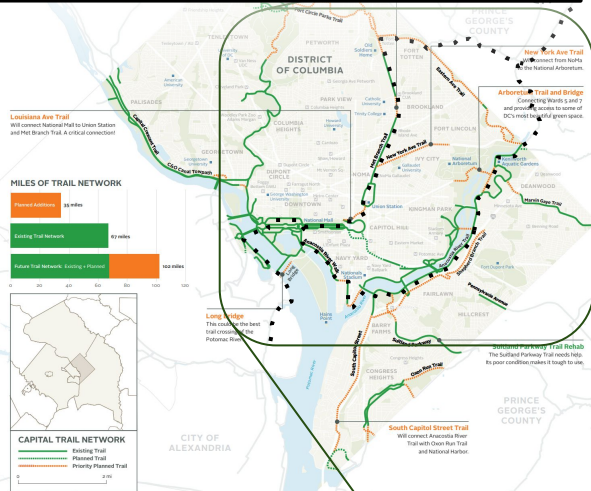
# PRINCE GEORGE'S COUNTY

## Capital Trail Network





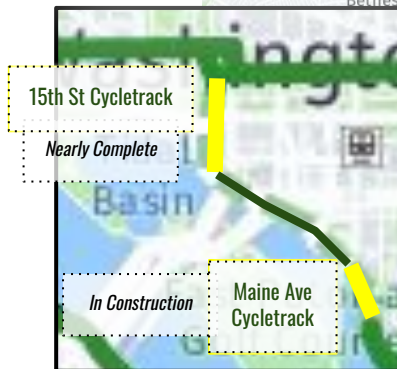
# DISTRICT OF COLUMBIA Capital Trails



## DISTRICT OF COLUMBIA Capital Trail Network



# PRINCE GEORGE'S COUNTY & WASHINGTON, DC



DC

Prince George's  
Connector Trail

TRB Land Use:  
30% Design

Nearly Complete

Met Branch Trail: Ft  
Totten-Brookland

National Mall  
Pathways

Mt. Vernon  
Trail

Greenbelt Metro  
Connector Trail

TAP: Construction

WB&A Trail

NW Branch  
Trail

NE Branch  
Trail

NE Branch  
Trail

WB&A Trail Extension  
(MD-704 Sidepath)

Anacostia River Trail

Marvin Gaye  
Trail

Frederick Douglass  
Bridge Paths

Buzzard Point

In Progress

MD

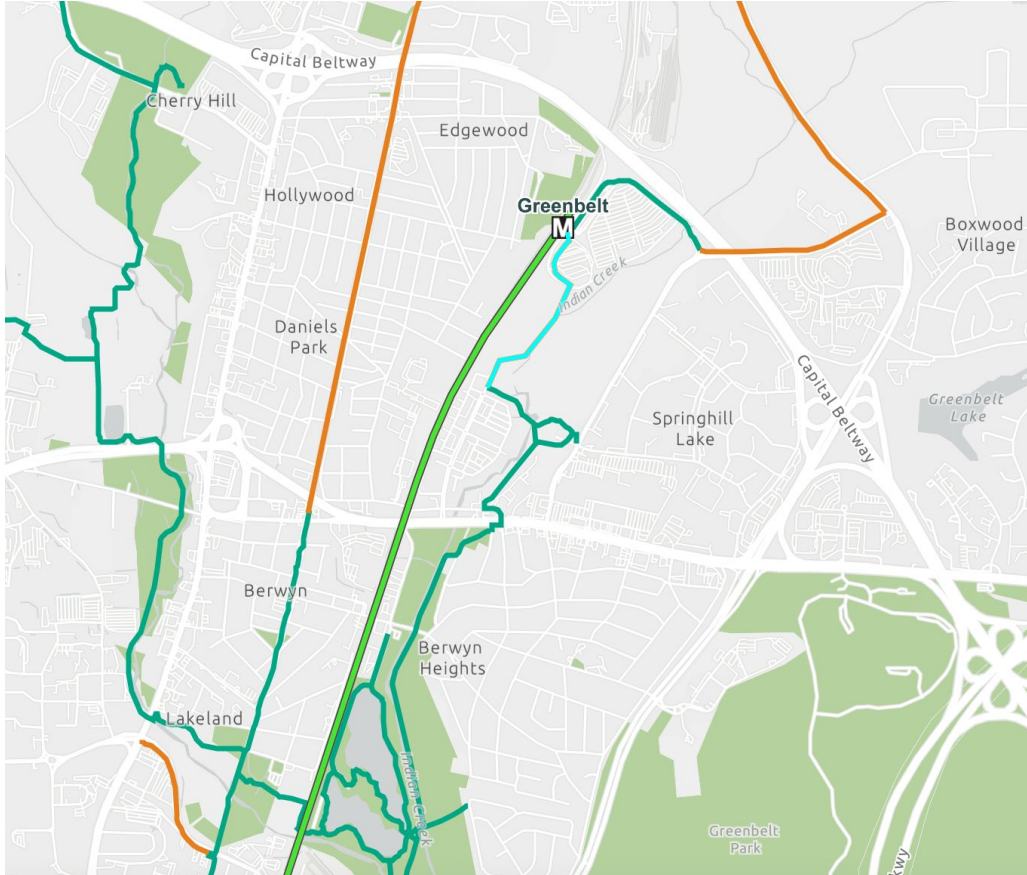


East Coast Greenway

- COMPLETED TRAIL
- PLANNED TRAIL (DASHED)
- ON ROAD ROUTE



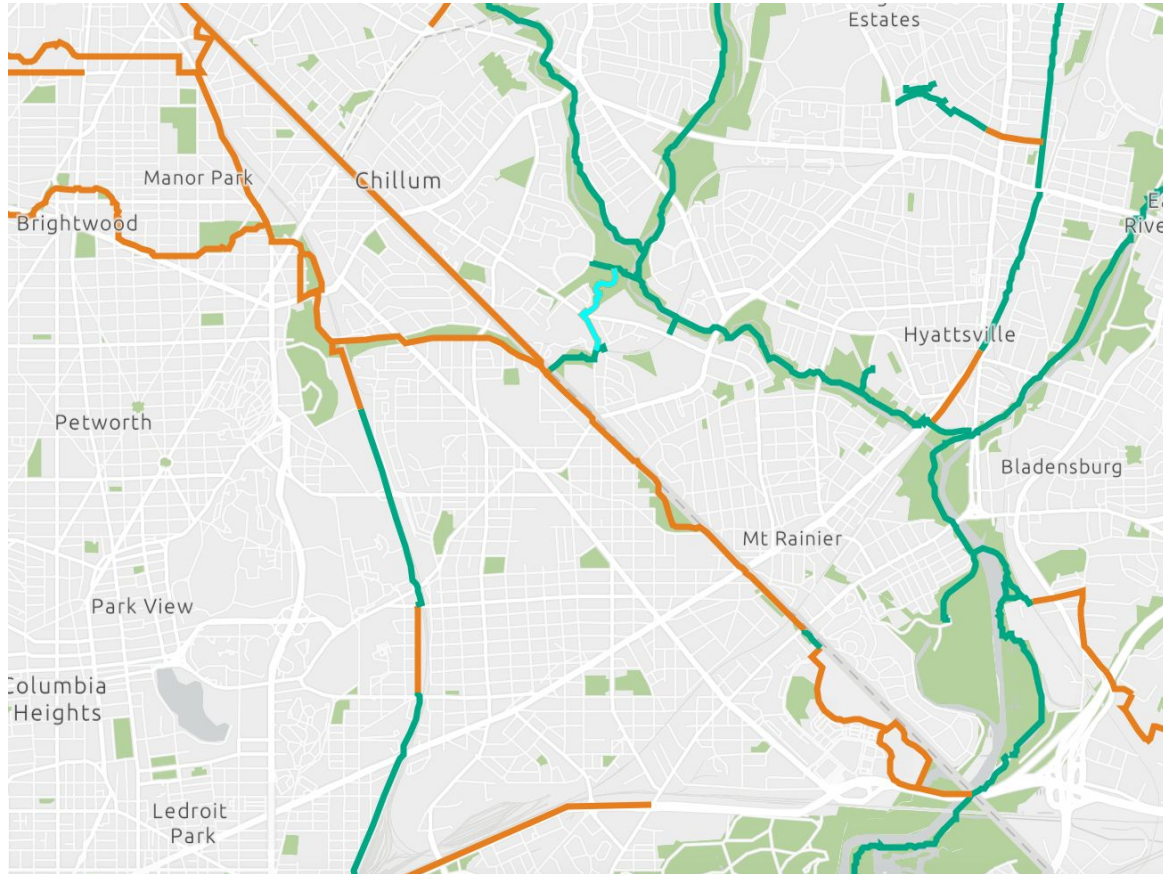
# Greenbelt Metro Connector Trail



- City of Greenbelt applied for a Transportation Alternatives grant and was awarded \$1.5 million to construct a .6 mile multi-use trail at the Greenbelt Metro Station
- Will connect neighborhoods and provide safe pedestrian and bicycle connection to commercial properties, regional parks, and the existing trail network, including Indian Creek Trail and Lake Artemisia

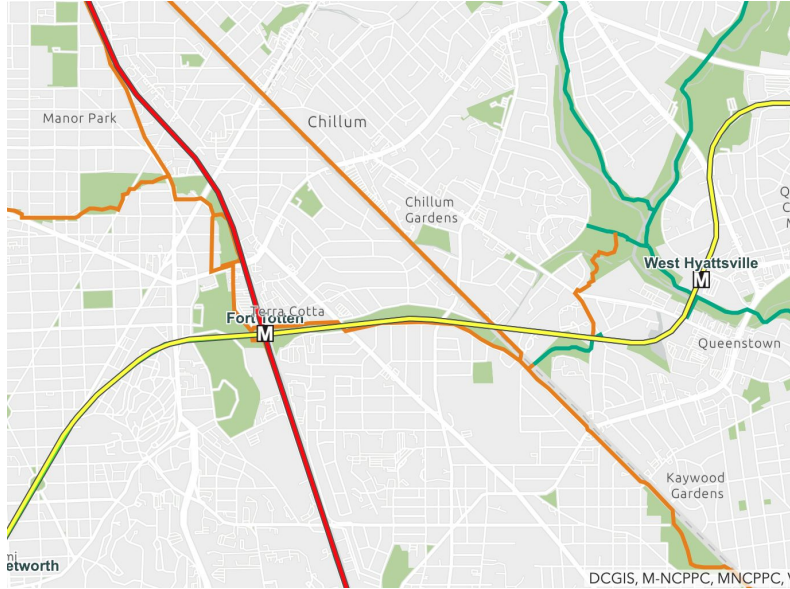


# Prince George's Connector Trail



- .6 mile connection
- Involves MNCPPC, private land, and DPWT.
- Just kicked off 30% design with RKK.
- Won COG Transportation Land Use Connections Funds for the design work.
- Design will be done by June 30th .

# Metropolitan Branch Trail (MBT)

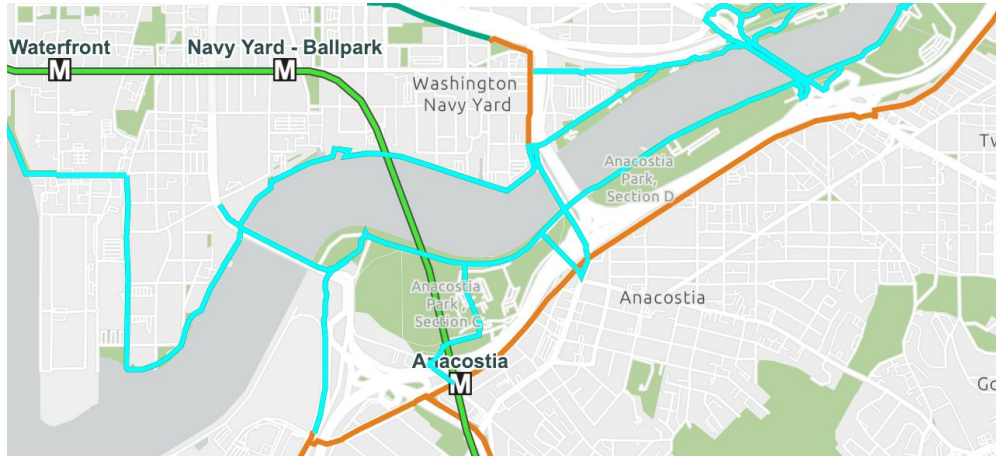


- .5 miles
- Opening December 2021





# Frederick Douglass Bridge





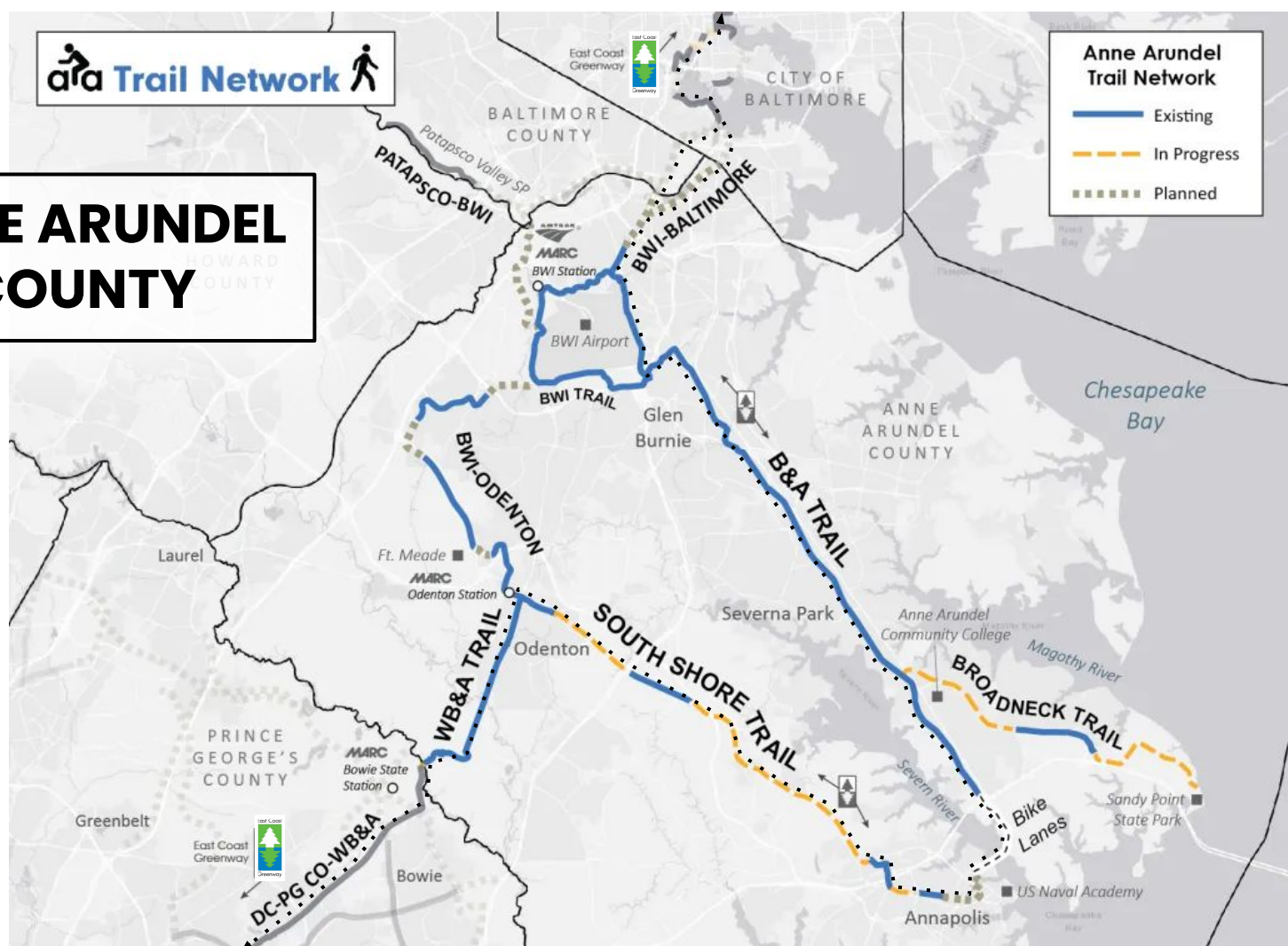
# 15th Street Cycle Track Extension



- Feb 2020: National Park Service approved plan for improvements at Buzzard Point Park

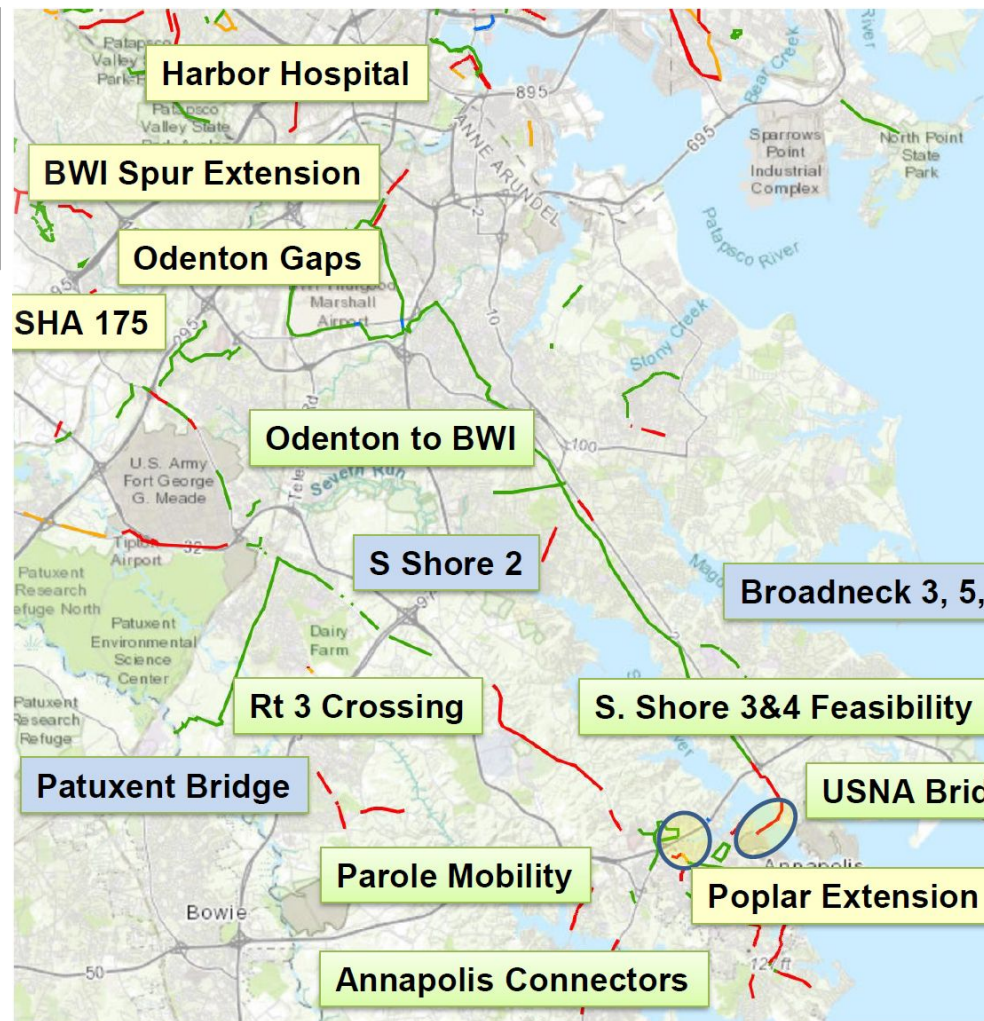


# ANNE ARUNDEL COUNTY





# ANNE ARUNDEL COUNTY



## Selected Studies, Design & Construction Projects

Study

Design

Construction

# ANNE ARUNDEL COUNTY



## East Coast Greenway

- COMPLETED TRAIL
- PLANNED TRAIL (DASHED)
- ON ROAD ROUTE

## Baltimore

MD Bikeways  
Design

## Little Branch Trail

## BWI Loop Train Spur Extension

## Greater Baybrook

## Applying for 100% design

WB&amp;A Trai

WB&A Trail  
Bridge over the  
Patuxent River

## Out to bid for Construction

## BWI Tra

## Glen Burnie

## South Shore Trail Phase 2

## B&A Train

Jennifer R  
Cycletrack

## South Shore Trail

## Poplar Trail to South Shore Trail

## Poplar Trail

## South Shore Trail

**TAP: Construction  
Funded**

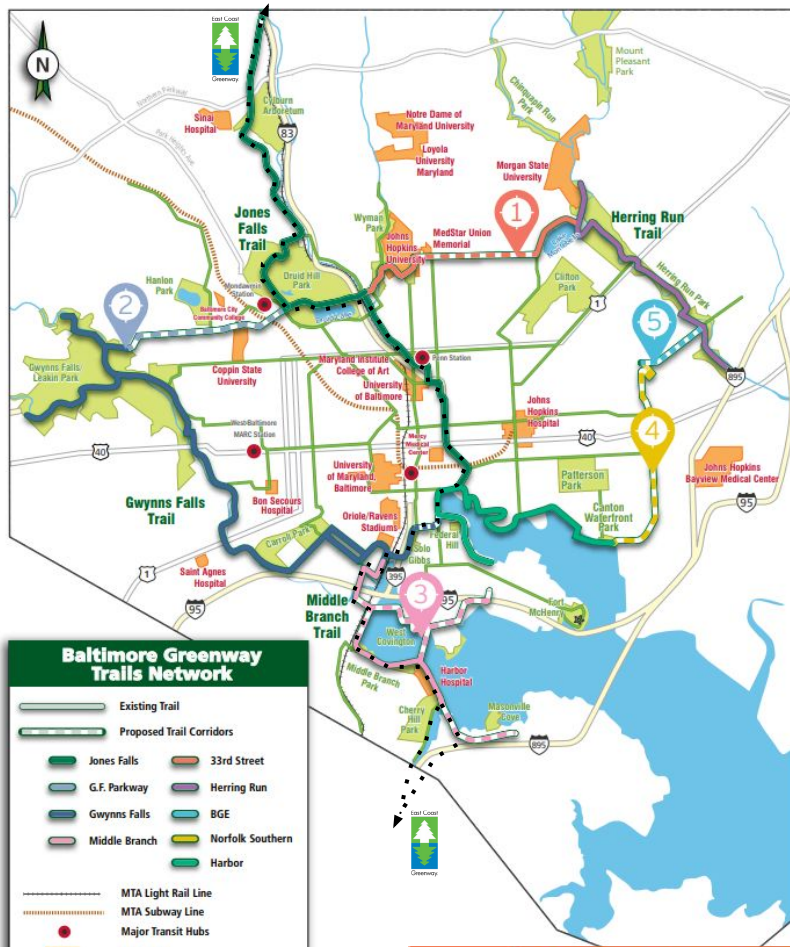
WB&amp;A Tra

## Annapolis

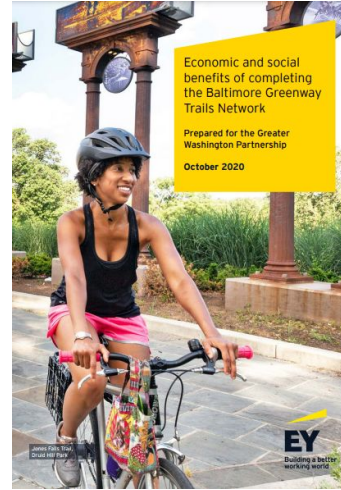
## College Park

A photograph of two women standing with their bicycles on a paved trail. The woman on the left is wearing a yellow and green cycling jersey and black shorts. The woman on the right is wearing a white cycling jersey with a colorful graphic and black shorts. They are both smiling. Between them is a white sign with a black triangle containing the word 'TRAIL' in a stylized font. The background shows a wooden building and lush green trees.





Source: RTC



## Economic and social benefits of completing the Baltimore Greenway Trails Network

October 2020

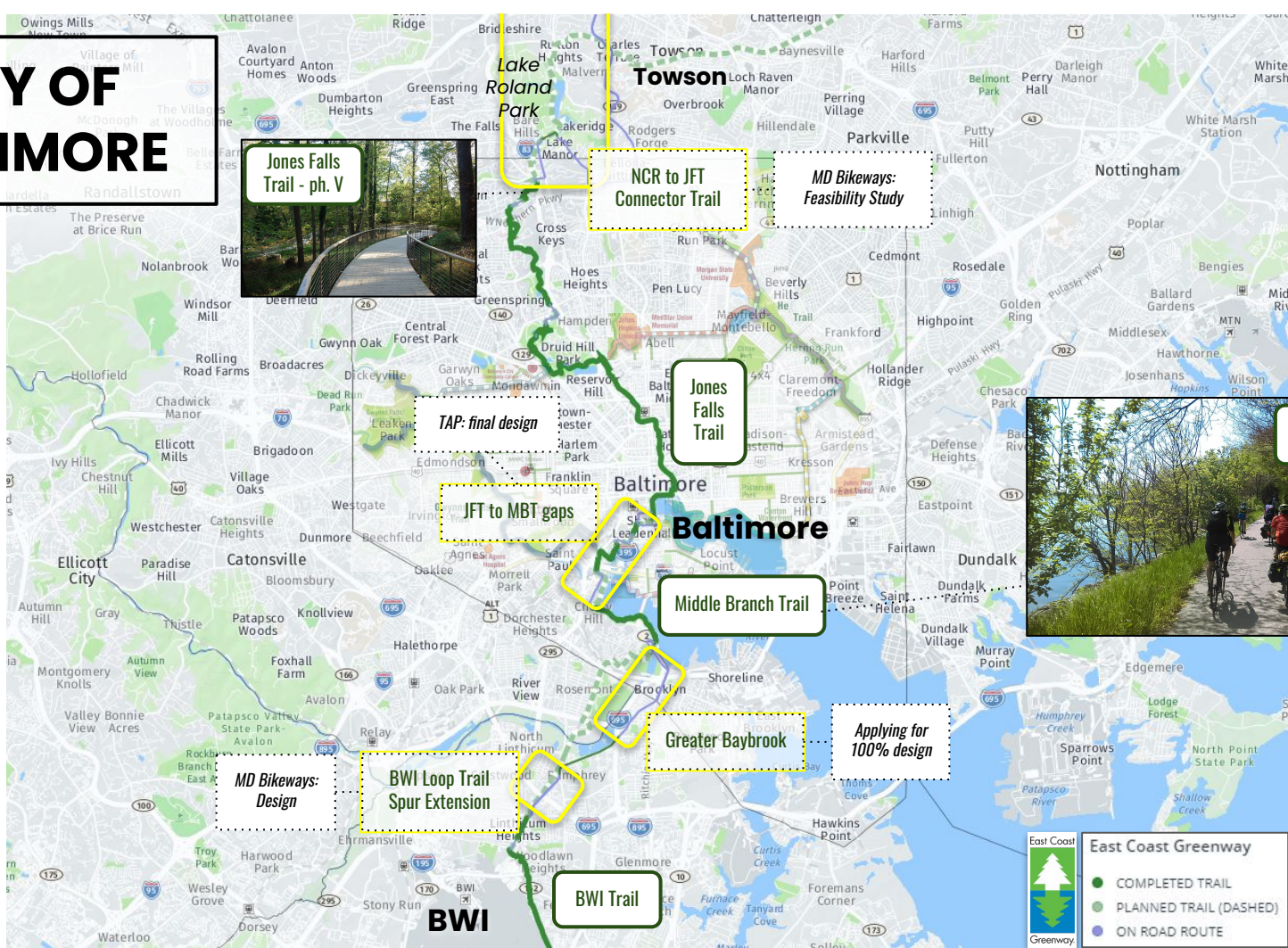
<https://greaterwashingtonpartnership.com/publications/economic-and-social-benefits-of-completing-the-baltimore-greenway-trails-network/>

- 1 East 33rd Street 1.4 miles
- 2 West Gwynns Falls Parkway 2.0 miles
- 3 Middle Branch 1.6 miles
- 4 Highlandtown Highline 2.0 miles
- 5 BGE Utility Corridor 1.5 miles

# CITY OF BALTIMORE



# CITY OF BALTIMORE



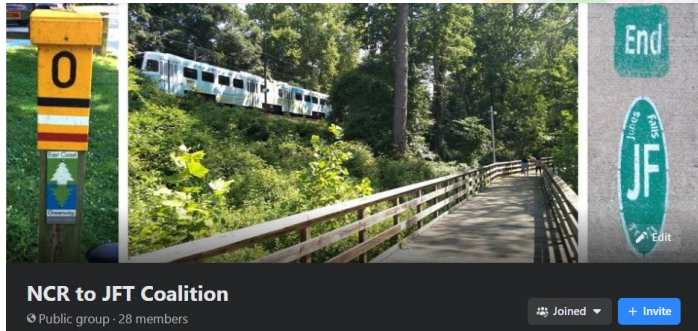
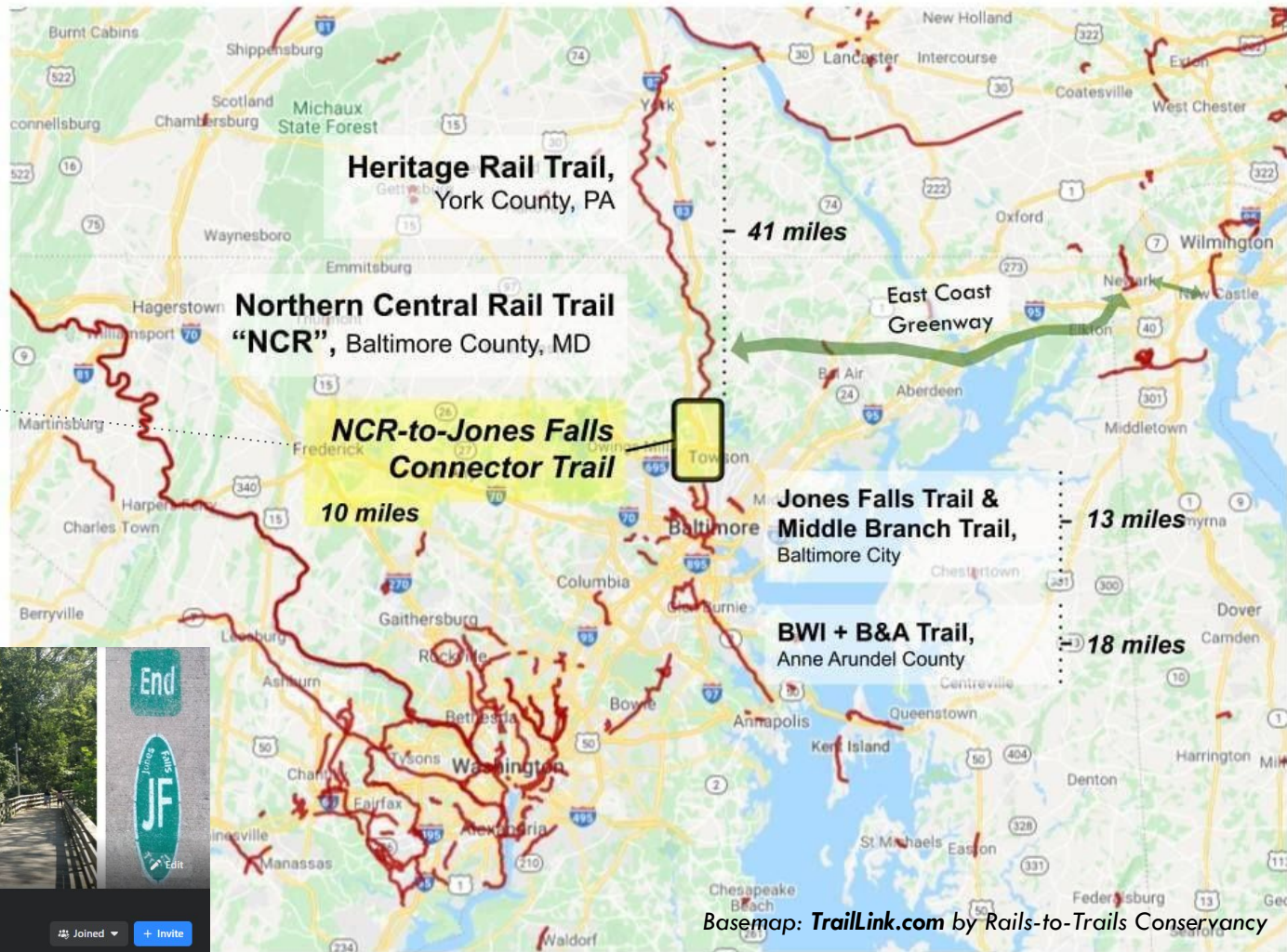
Middle Branch Trail



# BALTIMORE COUNTY

NCR to JFT Connector Trail

*MD Bikeways for  
feasibility study*



**NCR to JFT Coalition**

Public group · 28 members

Joined

Invite

Basemap: [TrailLink.com](https://www.trailink.com) by Rails-to-Trails Conservancy



# NCR Torrey Brown-to-JFT Connector Trail

**Bicycle Facilities**

Potential Future Bicycle Improvement: Light Rail/Roland Run Greenway

**Name:** Light Rail/Roland Run Greenway

**Name Type of Facility:** Unpaved shared use path

**Route:**

**Existing Bicycle Level of Comfort:** Not Applicable™

**Proposed Bicycle Level of Comfort:** Not Applicable™

**Comment:** Feasibility study for trail implementation

# BALTIMORE COUNTY

2012

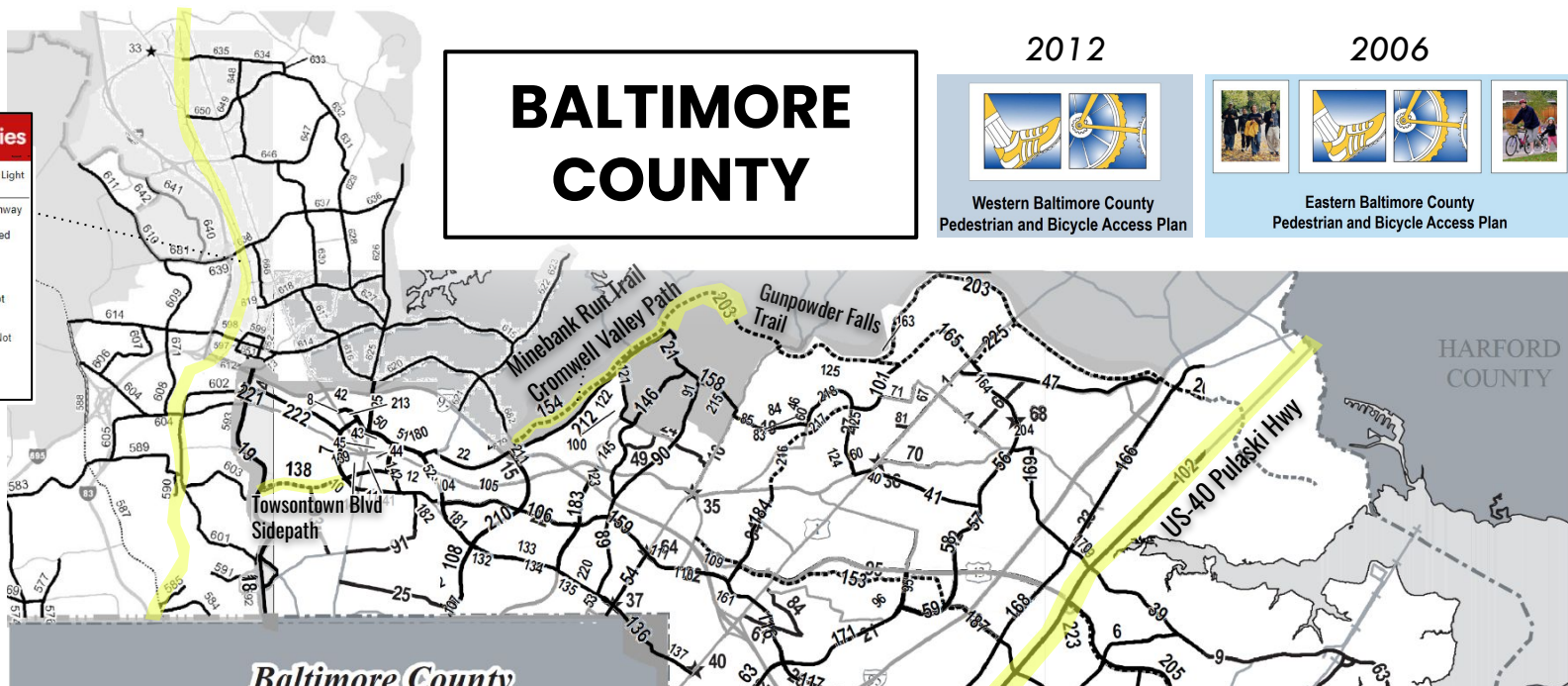


Western Baltimore County  
Pedestrian and Bicycle Access Plan

2006



Eastern Baltimore County  
Pedestrian and Bicycle Access Plan



## Baltimore County Proposed Pedestrian Improvements

- ★ 87 Pedestrian Improvement
- 95 — Shared-Use Trail\*
- Existing Trail
- Arterial Road
- + Passenger Rail

\*See bicycle improvements

**Resilience 2050**  
Adapting to the Challenges of Tomorrow



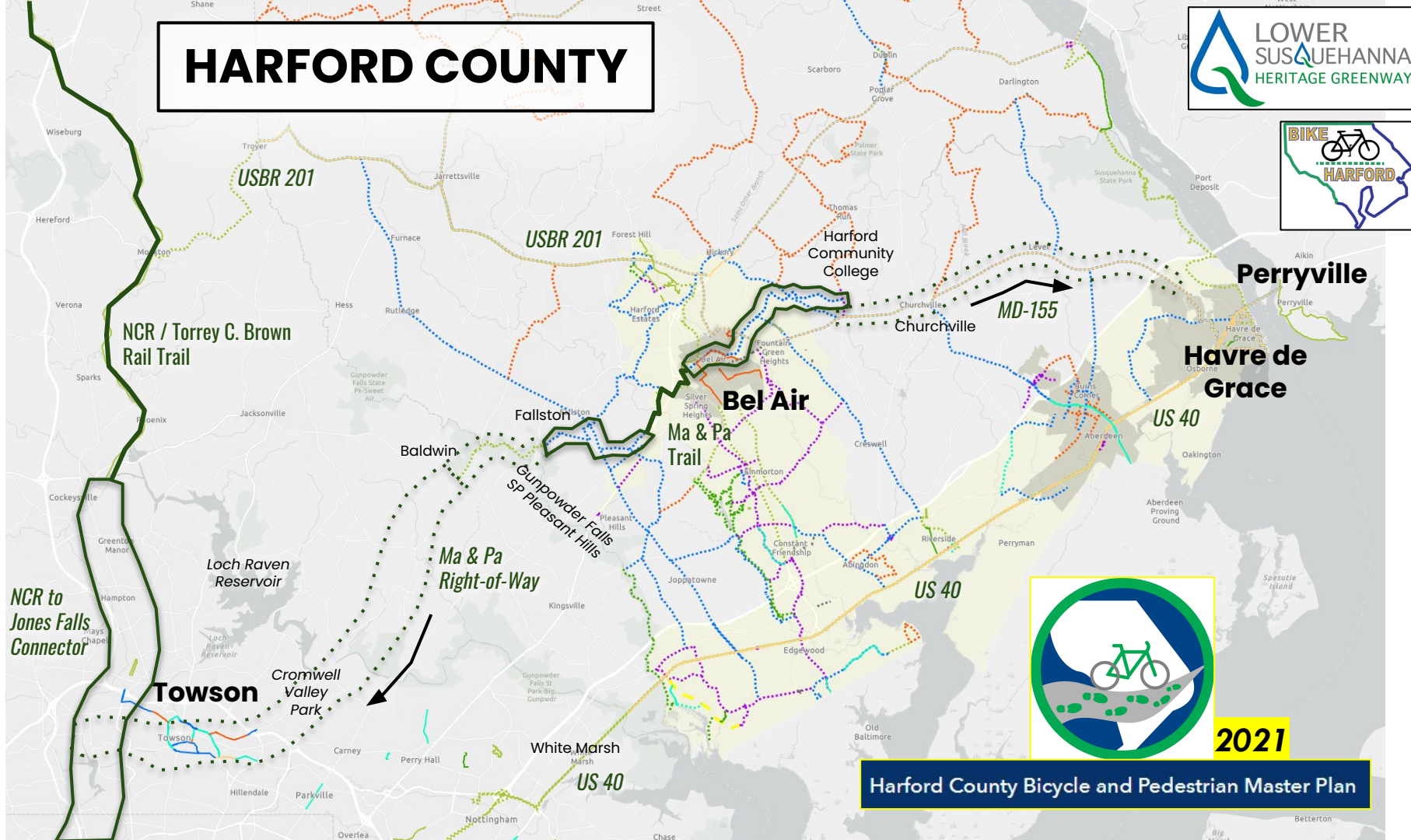
2021

BALTIMORE COUNTY

**BICYCLE & PEDESTRIAN  
MASTER PLAN**



# HARFORD COUNTY

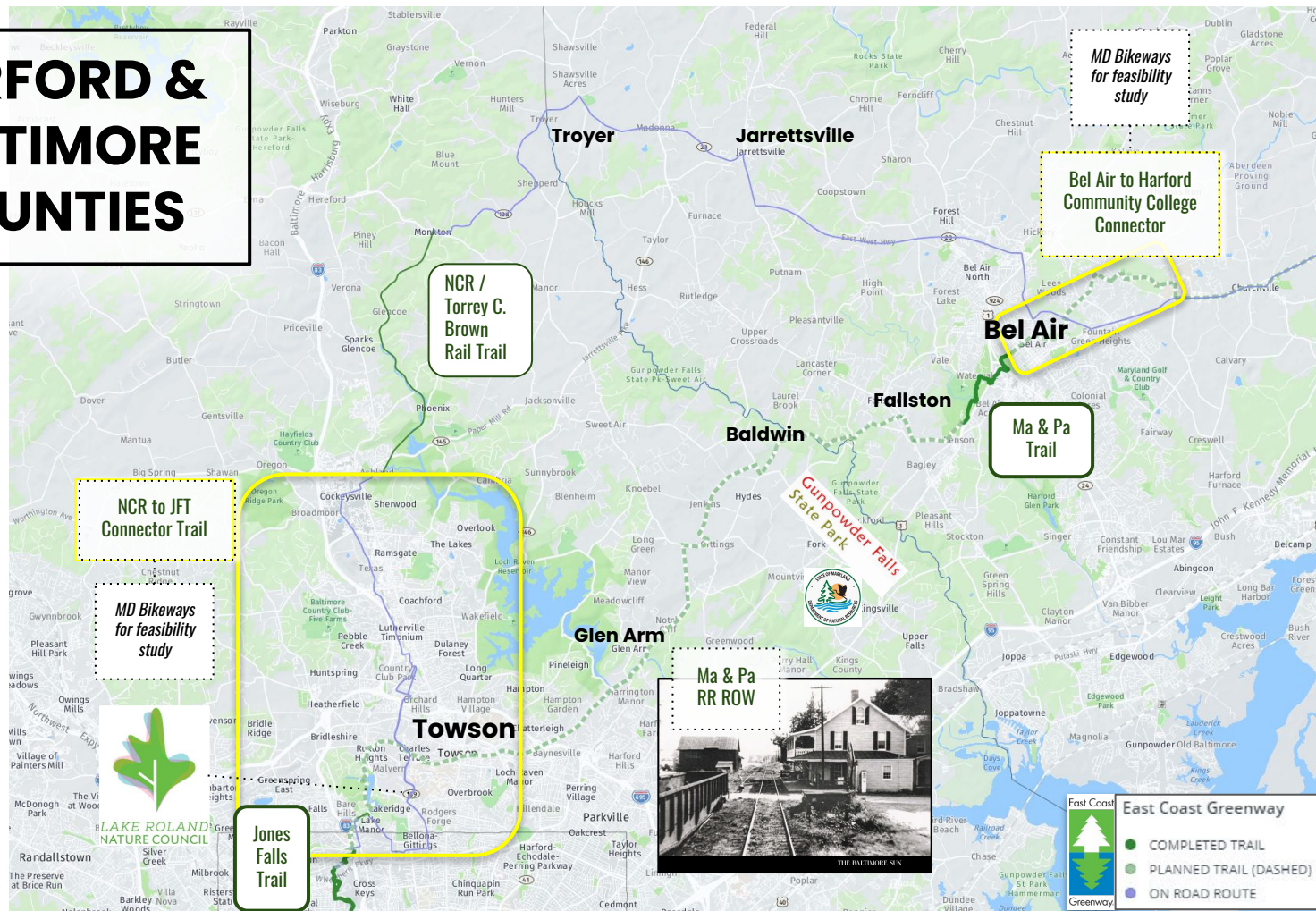


**2021**

**Harford County Bicycle and Pedestrian Master Plan**



# HARFORD & BALTIMORE COUNTIES





# HARFORD COUNTY

MD Bikeways:  
feasibility  
study

Bel Air to Harford  
Community College  
Connector


Ma & Pa  
Trail

US40 bike-only  
S, Su

Harford LINK,  
weekdays

Havre de  
Grace ?

East Coast  
Greenway

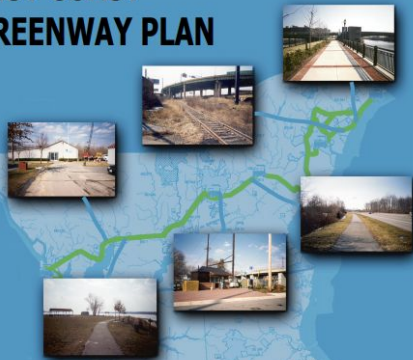


● COMPLETED TRAIL  
● PLANNED TRAIL (DASHED)  
● ON ROAD ROUTE



# CECIL COUNTY

## EAST COAST GREENWAY PLAN



Prepared by : Urban Engineers, Inc.  
In Association with  
Campbell Thomas & Company

Prepared for : WILMAPCO  
In Partnership with  
New Castle County, Cecil County,  
DelDOT & MDOT



May 2003



## Cecil County Cyclists

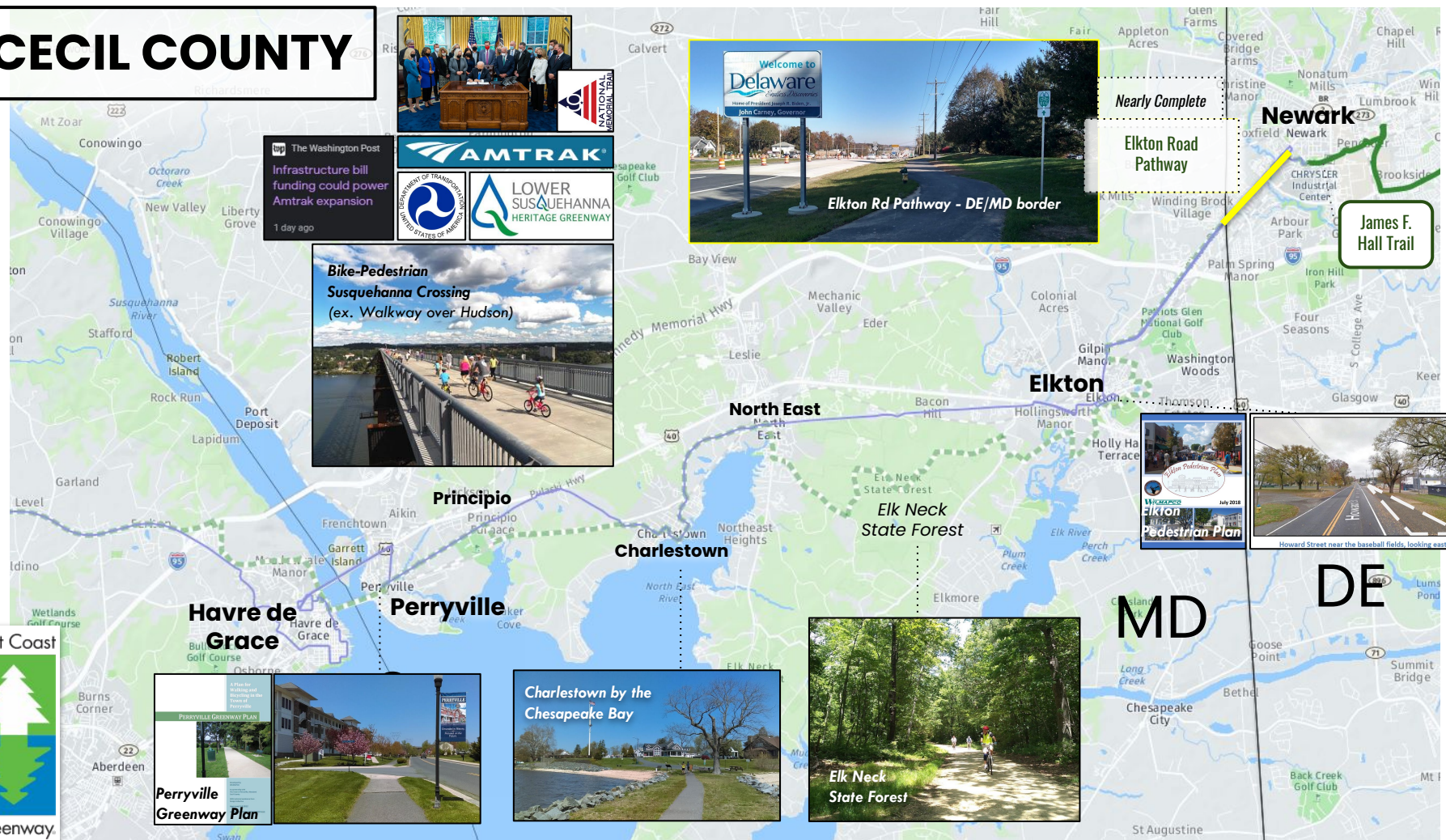
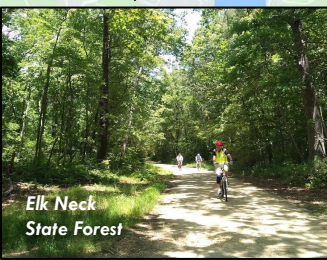
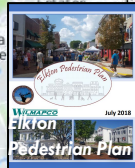
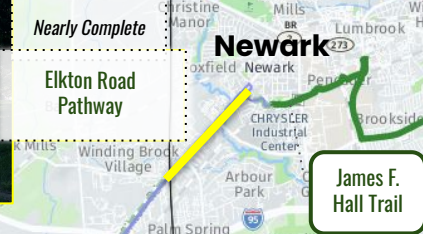
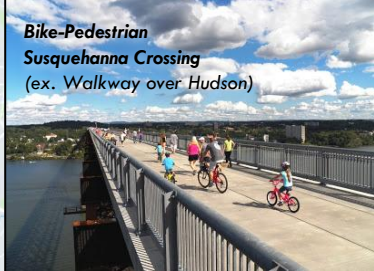




# CECIL COUNTY



**The Washington Post**  
Infrastructure bill funding could power Amtrak expansion  
1 day ago





# Thank you!

*Montgomery Explorers &  
Prince George's Club 300  
Anacostia River Trail*

## **Presenters (in order of appearance):**

Daniel Paschall - East Coast Greenway Alliance

Steph Piperno - Washington Area Bicyclist Association & Capital Trails Coalition

Jon Korin - BikeAAA & Anne Arundel Trails Network

Ethan Abbott - Rails-to-Trails Conservancy & Baltimore Greenway Trail Network Coalition

Elliott Plack - NCR-to-JFT Coalition

Bruce Kinzinger - Bike Harford

Brigitte Carty - Lower Susquehanna Heritage Greenway

Heather Dunigan - Wilmington Area Planning Council (WILMAPCO)